



# ANNUAL STATEMENT

For the Year Ended December 31, 2019

of the Condition and Affairs of the

## MMM Multi Health, LLC

NAIC Group Code..... 4812, 4812 (Current Period) (Prior Period) NAIC Company Code..... 12534 Employer's ID Number..... 660653763

Organized under the Laws of PR State of Domicile or Port of Entry PR Country of Domicile US

Licensed as Business Type Is HMO Federally Qualified? Yes [X] No [ ]

Incorporated/Organized..... February 18, 2012 Commenced Business..... March 1, 2012

Statutory Home Office 350 CHARDON AVE STE 350 .. SAN JUAN .. PR .. 00918  
(Street and Number) (City or Town, State, Country and Zip Code)

Main Administrative Office 350 CHARDON AVE STE 350 .. SAN JUAN .. PR .. 00918  
(Street and Number) (City or Town, State, Country and Zip Code) (Area Code) (Telephone Number)

Mail Address 350 CHARDON AVE STE 350 .. SAN JUAN .. PR .. 00918  
(Street and Number or P. O. Box) (City or Town, State, Country and Zip Code)

Primary Location of Books and Records 350 CHARDON AVE STE 350 .. SAN JUAN .. PR .. 00918  
(Street and Number) (City or Town, State, Country and Zip Code) (Area Code) (Telephone Number)

Internet Web Site Address www.mmm-pr.com

Statutory Statement Contact LE ANN RIVERA 787-622-3000  
(Name) (Area Code) (Telephone Number) (Extension)  
leann.rivera@mmmhc.com (E-Mail Address) (Fax Number)

### OFFICERS

Name	Title	Name	Title
1. ORLANDO GONZALEZ	PRESIDENT	2. CARLOS VIVALDI	CFO
3.		4.	

### OTHER

RICHARD SHINTO	CEO	ORLANDO GONZALEZ	PRESIDENT
PAUL KLAUSNER	SECRETARY	DOUGLAS MALTON	VICEPRESIDENT
MICHAEL J SORTINO	CHIEF ACCOUNTING OFFICER	EYMINEL VIEL	ASSISTANT SECRETARY
CARLOS VIVALDI	CFO	MANUEL SANCHEZ SIERRA	COO

### DIRECTORS OR TRUSTEES

RICHARD SHINTO ORLANDO GONZALEZ DOUGLAS MALTON CARLOS VIVALDI

State of.....  
County of.....

The officers of this reporting entity being duly sworn, each depose and say that they are the described officers of said reporting entity, and that on the reporting period stated above, all of the herein described assets were the absolute property of the said reporting entity, free and clear from any liens or claims thereon, except as herein stated, and that this statement, together with related exhibits, schedules and explanations therein contained, annexed or referred to, is a full and true statement of all the assets and liabilities and of the condition and affairs of the said reporting entity as of the reporting period stated above, and of its income and deductions therefrom for the period ended, and have been completed in accordance with the NAIC *Annual Statement Instructions and Accounting Practices and Procedures* manual except to the extent that: (1) state law may differ; or, (2) that state rules or regulations require differences in reporting not related to accounting practices and procedures, according to the best of their information, knowledge and belief, respectively. Furthermore, the scope of this attestation by the described officers also includes the related corresponding electronic filing with the NAIC, when required, that is an exact copy (except for formatting differences due to electronic filing) of the enclosed statement. The electronic filing may be requested by various regulators in lieu of or in addition to the enclosed statement.

_____ (Signature) ORLANDO GONZALEZ	_____ (Signature) CARLOS VIVALDI	_____ (Signature)
1. (Printed Name) PRESIDENT	2. (Printed Name) CFO	3. (Printed Name)
_____ (Title)	_____ (Title)	_____ (Title)

Subscribed and sworn to before me  
This \_\_\_\_\_ day of \_\_\_\_\_ 2020

a. Is this an original filing? Yes [X] No [ ]  
b. If no 1. State the amendment number \_\_\_\_\_  
2. Date filed \_\_\_\_\_  
3. Number of pages attached \_\_\_\_\_

## ASSETS

	Current Year			Prior Year
	1 Assets	2 Nonadmitted Assets	3 Net Admitted Assets (Cols. 1 - 2)	4 Net Admitted Assets
1. Bonds (Schedule D).....	56,664,674		56,664,674	53,448,985
2. Stocks (Schedule D):				
2.1 Preferred stocks.....			.0	
2.2 Common stocks.....			.0	
3. Mortgage loans on real estate (Schedule B):				
3.1 First liens.....			.0	
3.2 Other than first liens.....			.0	
4. Real estate (Schedule A):				
4.1 Properties occupied by the company (less \$.....0 encumbrances).....			.0	
4.2 Properties held for the production of income (less \$.....0 encumbrances).....			.0	
4.3 Properties held for sale (less \$.....0 encumbrances).....			.0	
5. Cash (\$.....70,584,499, Schedule E-Part 1), cash equivalents (\$.....15,645,524, Schedule E-Part 2) and short-term investments (\$.....0, Schedule DA).....	86,230,022		86,230,022	75,742,119
6. Contract loans (including \$.....0 premium notes).....			.0	
7. Derivatives (Schedule DB).....			.0	
8. Other invested assets (Schedule BA).....			.0	
9. Receivables for securities.....			.0	
10. Securities lending reinvested collateral assets (Schedule DL).....			.0	
11. Aggregate write-ins for invested assets.....	.0	.0	.0	.0
12. Subtotals, cash and invested assets (Lines 1 to 11).....	142,894,696	.0	142,894,696	129,191,104
13. Title plants less \$.....0 charged off (for Title insurers only).....			.0	
14. Investment income due and accrued.....	272,452		272,452	251,192
15. Premiums and considerations:				
15.1 Uncollected premiums and agents' balances in the course of collection.....	8,024,036		8,024,036	8,274,109
15.2 Deferred premiums, agents' balances and installments booked but deferred and not yet due (including \$.....0 earned but unbilled premiums).....			.0	
15.3 Accrued retrospective premiums (\$.....0) and contracts subject to redetermination (\$.....0).....			.0	
16. Reinsurance:				
16.1 Amounts recoverable from reinsurers.....			.0	
16.2 Funds held by or deposited with reinsured companies.....			.0	
16.3 Other amounts receivable under reinsurance contracts.....			.0	
17. Amounts receivable relating to uninsured plans.....			.0	
18.1 Current federal and foreign income tax recoverable and interest thereon.....			.0	
18.2 Net deferred tax asset.....	2,768,428	2,299,496	468,932	2,910,191
19. Guaranty funds receivable or on deposit.....			.0	
20. Electronic data processing equipment and software.....			.0	
21. Furniture and equipment, including health care delivery assets (\$.....0).....			.0	
22. Net adjustment in assets and liabilities due to foreign exchange rates.....			.0	
23. Receivables from parent, subsidiaries and affiliates.....			.0	
24. Health care (\$.....0) and other amounts receivable.....			.0	
25. Aggregate write-ins for other-than-invested assets.....	1,344,786	263,304	1,081,482	849,419
26. Total assets excluding Separate Accounts, Segregated Accounts and Protected Cell Accounts (Lines 12 to 25).....	155,304,398	2,562,800	152,741,598	141,476,015
27. From Separate Accounts, Segregated Accounts and Protected Cell Accounts.....			.0	
28. TOTAL (Lines 26 and 27).....	155,304,398	2,562,800	152,741,598	141,476,015

### DETAILS OF WRITE-INS

1101.....			.0	
1102.....			.0	
1103.....			.0	
1198. Summary of remaining write-ins for Line 11 from overflow page.....	.0	.0	.0	.0
1199. Totals (Lines 1101 through 1103 plus 1198) (Line 11 above).....	.0	.0	.0	.0
2501. Advance to Providers.....	1,114,855	50,480	1,064,375	830,811
2502. Prepaid Expenses.....	212,824	212,824	.0	
2503. Other Assets.....	17,107		17,107	18,608
2598. Summary of remaining write-ins for Line 25 from overflow page.....	.0	.0	.0	.0
2599. Totals (Lines 2501 through 2503 plus 2598) (Line 25 above).....	1,344,786	263,304	1,081,482	849,419

**LIABILITIES, CAPITAL AND SURPLUS**

	Current Period			Prior Year
	1 Covered	2 Uncovered	3 Total	4 Total
1. Claims unpaid (less \$.....0 reinsurance ceded).....	55,203,009		55,203,009	61,697,799
2. Accrued medical incentive pool and bonus amounts.....	17,627,340		17,627,340	16,643,392
3. Unpaid claims adjustment expenses.....	447,538		447,538	531,943
4. Aggregate health policy reserves, including the liability of \$.....0 for medical loss ratio rebate per the Public Health Service Act.....			0	
5. Aggregate life policy reserves.....			0	
6. Property/casualty unearned premium reserves.....			0	
7. Aggregate health claim reserves.....			0	
8. Premiums received in advance.....			0	
9. General expenses due or accrued.....	20,205,757		20,205,757	1,146,605
10.1 Current federal and foreign income tax payable and interest thereon (including \$.....0 on realized capital gains (losses)).....	535,614		535,614	7,795,614
10.2 Net deferred tax liability.....			0	
11. Ceded reinsurance premiums payable.....			0	
12. Amounts withheld or retained for the account of others.....	20,014		20,014	9,217
13. Remittances and items not allocated.....			0	
14. Borrowed money (including \$.....0 current) and interest thereon \$.....0 (including \$.....0 current).....			0	
15. Amounts due to parent, subsidiaries and affiliates.....	8,408,354		8,408,354	2,105,005
16. Derivatives.....			0	
17. Payable for securities.....			0	
18. Payable for securities lending.....			0	
19. Funds held under reinsurance treaties with (\$.....0 authorized reinsurers, \$.....0 unauthorized reinsurers and \$.....0 certified reinsurers).....			0	
20. Reinsurance in unauthorized and certified (\$.....0) companies.....			0	
21. Net adjustments in assets and liabilities due to foreign exchange rates.....			0	
22. Liability for amounts held under uninsured plans.....			0	
23. Aggregate write-ins for other liabilities (including \$.....0 current).....	600,000	0	600,000	600,000
24. Total liabilities (Lines 1 to 23).....	103,047,626	0	103,047,626	90,529,574
25. Aggregate write-ins for special surplus funds.....	XXX	XXX	0	0
26. Common capital stock.....	XXX	XXX	400,000	400,000
27. Preferred capital stock.....	XXX	XXX		
28. Gross paid in and contributed surplus.....	XXX	XXX	58,762,271	58,762,271
29. Surplus notes.....	XXX	XXX		
30. Aggregate write-ins for other-than-special surplus funds.....	XXX	XXX	11,281,000	0
31. Unassigned funds (surplus).....	XXX	XXX	(20,749,299)	(8,215,830)
32. Less treasury stock at cost:				
32.1 .....0.000 shares common (value included in Line 26 \$.....0).....	XXX	XXX		
32.2 .....0.000 shares preferred (value included in Line 27 \$.....0).....	XXX	XXX		
33. Total capital and surplus (Lines 25 to 31 minus Line 32).....	XXX	XXX	49,693,972	50,946,441
34. Total liabilities, capital and surplus (Lines 24 and 33).....	XXX	XXX	152,741,598	141,476,015

**DETAILS OF WRITE-INS**

2301. Statutory Deposit.....	600,000		600,000	600,000
2302. ....			0	
2303. ....			0	
2398. Summary of remaining write-ins for Line 23 from overflow page.....	0	0	0	0
2399. Totals (Lines 2301 through 2303 plus 2398) (Line 23 above).....	600,000	0	600,000	600,000
2501. ....	XXX	XXX		
2502. ....	XXX	XXX		
2503. ....	XXX	XXX		
2598. Summary of remaining write-ins for Line 25 from overflow page.....	XXX	XXX	0	0
2599. Totals (Lines 2501 through 2503 plus 2598) (Line 25 above).....	XXX	XXX	0	0
3001. Special Surplus Funds.....	XXX	XXX	11,281,000	
3002. ....	XXX	XXX		
3003. ....	XXX	XXX		
3098. Summary of remaining write-ins for Line 30 from overflow page.....	XXX	XXX	0	0
3099. Totals (Lines 3001 through 3003 plus 3098) (Line 30 above).....	XXX	XXX	11,281,000	0

**STATEMENT OF REVENUE AND EXPENSES**

	Current Year		Prior Year
	1 Uncovered	2 Total	3 Total
1. Member months.....	XXX	3,256,103	3,204,313
2. Net premium income (including \$.....0 non-health premium income).....	XXX	613,780,411	570,652,756
3. Change in unearned premium reserves and reserve for rate credits.....	XXX		
4. Fee-for-service (net of \$.....0 medical expenses).....	XXX		
5. Risk revenue.....	XXX		
6. Aggregate write-ins for other health care related revenues.....	XXX	.0	.0
7. Aggregate write-ins for other non-health revenues.....	XXX	.0	.0
8. Total revenues (Lines 2 to 7).....	XXX	613,780,411	570,652,756
<b>Hospital and Medical:</b>			
9. Hospital/medical benefits.....		144,873,155	318,338,253
10. Other professional services.....		206,790,677	
11. Outside referrals.....			
12. Emergency room and out-of-area.....		31,271,153	26,113,096
13. Prescription drugs.....		157,819,634	132,387,978
14. Aggregate write-ins for other hospital and medical.....	.0	.0	.0
15. Incentive pool, withhold adjustments and bonus amounts.....		21,783,378	23,254,885
16. Subtotal (Lines 9 to 15).....	.0	562,537,997	500,094,212
<b>Less:</b>			
17. Net reinsurance recoveries.....			
18. Total hospital and medical (Lines 16 minus 17).....	.0	562,537,997	500,094,212
19. Non-health claims (net).....			
20. Claims adjustment expenses, including \$.....0 cost containment expenses.....			
21. General administrative expenses.....		60,299,197	52,864,872
22. Increase in reserves for life and accident and health contracts including \$.....0 increase in reserves for life only).....			
23. Total underwriting deductions (Lines 18 through 22).....	.0	622,837,194	552,959,084
24. Net underwriting gain or (loss) (Lines 8 minus 23).....	XXX	(9,056,783)	17,693,672
25. Net investment income earned (Exhibit of Net Investment Income, Line 17).....		2,133,683	1,804,558
26. Net realized capital gains or (losses) less capital gains tax of \$.....0.....		(1,879)	(17,549)
27. Net investment gains or (losses) (Lines 25 plus 26).....	.0	2,131,804	1,787,009
28. Net gain or (loss) from agents' or premium balances charged off [(amount recovered \$.....0) (amount charged off \$.....0)].....			
29. Aggregate write-ins for other income or expenses.....	.0	.0	.0
30. Net income or (loss) after capital gains tax and before all other federal income taxes (Lines 24 plus 27 plus 28 plus 29).....	XXX	(6,924,979)	19,480,681
31. Federal and foreign income taxes incurred.....	XXX	(617,100)	7,522,525
32. Net income (loss) (Lines 30 minus 31).....	XXX	(6,307,879)	11,958,156

**DETAILS OF WRITE-INS**

0601. ....	XXX		
0602. ....	XXX		
0603. ....	XXX		
0698. Summary of remaining write-ins for Line 6 from overflow page.....	XXX	.0	.0
0699. Totals (Lines 0601 through 0603 plus 0698) (Line 6 above).....	XXX	.0	.0
0701. ....	XXX		
0702. ....	XXX		
0703. ....	XXX		
0798. Summary of remaining write-ins for Line 7 from overflow page.....	XXX	.0	.0
0799. Totals (Lines 0701 through 0703 plus 0798) (Line 7 above).....	XXX	.0	.0
1401. ....			
1402. ....			
1403. ....			
1498. Summary of remaining write-ins for Line 14 from overflow page.....	.0	.0	.0
1499. Totals (Lines 1401 through 1403 plus 1498) (Line 14 above).....	.0	.0	.0
2901. ....			
2902. ....			
2903. ....			
2998. Summary of remaining write-ins for Line 29 from overflow page.....	.0	.0	.0
2999. Totals (Lines 2901 through 2903 plus 2998) (Line 29 above).....	.0	.0	.0

**STATEMENT OF REVENUE AND EXPENSES (Continued)**

CAPITAL AND SURPLUS ACCOUNT	1 Current Year	2 Prior Year
33. Capital and surplus prior reporting period.....	50,946,441	55,771,595
34. Net income or (loss) from Line 32.....	(6,307,879)	11,958,156
35. Change in valuation basis of aggregate policy and claim reserves.....		
36. Change in net unrealized capital gains and (losses) less capital gains tax of \$.....0.....		
37. Change in net unrealized foreign exchange capital gain or (loss).....		
38. Change in net deferred income tax.....	(141,763)	1,890,311
39. Change in nonadmitted assets.....	5,201,128	(3,071,550)
40. Change in unauthorized and certified reinsurance.....		
41. Change in treasury stock.....		
42. Change in surplus notes.....		
43. Cumulative effect of changes in accounting principles.....		
44. Capital changes:		
44.1 Paid in.....		
44.2 Transferred from surplus (Stock Dividend).....		
44.3 Transferred to surplus.....		
45. Surplus adjustments:		
45.1 Paid in.....		
45.2 Transferred to capital (Stock Dividend).....		
45.3 Transferred from capital.....		
46. Dividends to stockholders.....		(15,603,000)
47. Aggregate write-ins for gains or (losses) in surplus.....	(3,955)	929
48. Net change in capital and surplus (Lines 34 to 47).....	(1,252,469)	(4,825,154)
49. Capital and surplus end of reporting period (Line 33 plus 48).....	49,693,972	50,946,441

**DETAILS OF WRITE-INS**

4701. Other Surplus Adjustment.....	(3,955)	929
4702. ....		
4703. ....		
4798. Summary of remaining write-ins for Line 47 from overflow page.....	0	0
4799. Totals (Lines 4701 through 4703 plus 4798) (Line 47 above).....	(3,955)	929

## CASH FLOW

	1 Current Year	2 Prior Year
<b>CASH FROM OPERATIONS</b>		
1. Premiums collected net of reinsurance.....	639,738,117	574,875,866
2. Net investment income.....	1,596,347	2,279,322
3. Miscellaneous income.....		
4. Total (Lines 1 through 3).....	641,334,464	577,155,188
5. Benefit and loss related payments.....	568,431,296	516,138,512
6. Net transfers to Separate Accounts, Segregated Accounts and Protected Cell Accounts.....		
7. Commissions, expenses paid and aggregate write-ins for deductions.....	53,071,838	55,303,826
8. Dividends paid to policyholders.....		
9. Federal and foreign income taxes paid (recovered) net of \$.....0 tax on capital gains (losses).....	6,642,899	
10. Total (Lines 5 through 9).....	628,146,033	571,442,338
11. Net cash from operations (Line 4 minus Line 10).....	13,188,431	5,712,850
<b>CASH FROM INVESTMENTS</b>		
12. Proceeds from investments sold, matured or repaid:		
12.1 Bonds.....	20,709,680	28,513,237
12.2 Stocks.....		
12.3 Mortgage loans.....		
12.4 Real estate.....		
12.5 Other invested assets.....		
12.6 Net gains or (losses) on cash, cash equivalents and short-term investments.....		
12.7 Miscellaneous proceeds.....		
12.8 Total investment proceeds (Lines 12.1 to 12.7).....	20,709,680	28,513,237
13. Cost of investments acquired (long-term only):		
13.1 Bonds.....	23,410,208	28,195,439
13.2 Stocks.....		
13.3 Mortgage loans.....		
13.4 Real estate.....		
13.5 Other invested assets.....		
13.6 Miscellaneous applications.....		
13.7 Total investments acquired (Lines 13.1 to 13.6).....	23,410,208	28,195,439
14. Net increase (decrease) in contract loans and premium notes.....		
15. Net cash from investments (Line 12.8 minus Lines 13.7 minus Line 14).....	(2,700,528)	317,798
<b>CASH FROM FINANCING AND MISCELLANEOUS SOURCES</b>		
16. Cash provided (applied):		
16.1 Surplus notes, capital notes.....		
16.2 Capital and paid in surplus, less treasury stock.....		
16.3 Borrowed funds.....		
16.4 Net deposits on deposit-type contracts and other insurance liabilities.....		
16.5 Dividends to stockholders.....		15,603,000
16.6 Other cash provided (applied).....		(353)
17. Net cash from financing and miscellaneous sources (Lines 16.1 to 16.4 minus Line 16.5 plus Line 16.6).....	0	(15,603,353)
<b>RECONCILIATION OF CASH, CASH EQUIVALENTS AND SHORT-TERM INVESTMENTS</b>		
18. Net change in cash, cash equivalents and short-term investments (Line 11, plus Lines 15 and 17).....	10,487,903	(9,572,705)
19. Cash, cash equivalents and short-term investments:		
19.1 Beginning of year.....	75,742,119	85,314,824
19.2 End of year (Line 18 plus Line 19.1).....	86,230,022	75,742,119

Note: Supplemental disclosures of cash flow information for non-cash transactions:

20.0001 .....		
---------------	--	--



## UNDERWRITING AND INVESTMENT EXHIBIT

### PART 1 - PREMIUMS

	1	2	3	4
Line of Business	Direct Business	Reinsurance Assumed	Reinsurance Ceded	Net Premium Income (Cols. 1 + 2 - 3)
1. Comprehensive (hospital and medical).....				.0
2. Medicare Supplement.....				.0
3. Dental only.....				.0
4. Vision only.....				.0
5. Federal Employees Health Benefits Plan.....				.0
6. Title XVIII - Medicare.....				.0
7. Title XIX - Medicaid.....	613,780,411			613,780,411
8. Other health.....				.0
9. Health subtotal (Lines 1 through 8).....	613,780,411	.0	.0	613,780,411
10. Life.....				.0
11. Property/casualty.....				.0
12. Totals (Lines 9 to 11).....	613,780,411	.0	.0	613,780,411



## UNDERWRITING AND INVESTMENT EXHIBIT

### PART 2 - CLAIMS INCURRED DURING THE YEAR

	1	2	3	4	5	6	7	8	9	10
	Total	Comprehensive (Hospital and Medical)	Medicare Supplement	Dental Only	Vision Only	Federal Employees Health Benefits Plan	Title XVIII Medicare	Title XIX Medicaid	Other Health	Other Non-Health
1. Payments during the year:										
1.1 Direct.....	547,249,409							547,249,409		
1.2 Reinsurance assumed.....	.0									
1.3 Reinsurance ceded.....	.0									
1.4 Net.....	547,249,409	.0	.0	.0	.0	.0	.0	547,249,409	.0	.0
2. Paid medical incentive pools and bonuses.....	20,799,430							20,799,430		
3. Claim liability December 31, current year from Part 2A:										
3.1 Direct.....	55,203,009							55,203,009		
3.2 Reinsurance assumed.....	.0									
3.3 Reinsurance ceded.....	.0									
3.4 Net.....	55,203,009	.0	.0	.0	.0	.0	.0	55,203,009	.0	.0
4. Claim reserve December 31, current year from Part 2D:										
4.1 Direct.....	.0									
4.2 Reinsurance assumed.....	.0									
4.3 Reinsurance ceded.....	.0									
4.4 Net.....	.0	.0	.0	.0	.0	.0	.0	.0	.0	.0
5. Accrued medical incentive pools and bonuses, current year.....	17,627,340							17,627,340		
6. Net healthcare receivables (a).....	.0									
7. Amounts recoverable from reinsurers December 31, current year.....	.0									
8. Claim liability December 31, prior year from Part 2A:										
8.1 Direct.....	61,697,799							61,697,799		
8.2 Reinsurance assumed.....	.0									
8.3 Reinsurance ceded.....	.0									
8.4 Net.....	61,697,799	.0	.0	.0	.0	.0	.0	61,697,799	.0	.0
9. Claim reserve December 31, prior year from Part 2D:										
9.1 Direct.....	.0									
9.2 Reinsurance assumed.....	.0									
9.3 Reinsurance ceded.....	.0									
9.4 Net.....	.0	.0	.0	.0	.0	.0	.0	.0	.0	.0
10. Accrued medical incentive pools and bonuses, prior year.....	16,643,392							16,643,392		
11. Amounts recoverable from reinsurers December 31, prior year.....	.0									
12. Incurred benefits:										
12.1 Direct.....	540,754,619	.0	.0	.0	.0	.0	.0	540,754,619	.0	.0
12.2 Reinsurance assumed.....	.0	.0	.0	.0	.0	.0	.0	.0	.0	.0
12.3 Reinsurance ceded.....	.0	.0	.0	.0	.0	.0	.0	.0	.0	.0
12.4 Net.....	540,754,619	.0	.0	.0	.0	.0	.0	540,754,619	.0	.0
13. Incurred medical incentive pools and bonuses.....	21,783,378	.0	.0	.0	.0	.0	.0	21,783,378	.0	.0

(a) Excludes \$.0 loans or advances to providers not yet expensed.

**UNDERWRITING AND INVESTMENT EXHIBIT**  
**PART 2A - CLAIMS LIABILITY END OF CURRENT YEAR**

	1	2	3	4	5	6	7	8	9	10
	Total	Comprehensive (Medical and Hospital)	Medicare Supplement	Dental Only	Vision Only	Federal Employees Health Benefits Plan	Title XVIII Medicare	Title XIX Medicaid	Other Health	Other Non-Health
1. Reported in process of adjustment:										
1.1 Direct.....	0									
1.2 Reinsurance assumed.....	0									
1.3 Reinsurance ceded.....	0									
1.4 Net.....	0	0	0	0	0	0	0	0	0	0
2. Incurred but unreported:										
2.1 Direct.....	55,203,009							55,203,009		
2.2 Reinsurance assumed.....	0									
2.3 Reinsurance ceded.....	0									
2.4 Net.....	55,203,009	0	0	0	0	0	0	55,203,009	0	0
3. Amounts withheld from paid claims and capitations:										
3.1 Direct.....	0									
3.2 Reinsurance assumed.....	0									
3.3 Reinsurance ceded.....	0									
3.4 Net.....	0	0	0	0	0	0	0	0	0	0
4. Totals:										
4.1 Direct.....	55,203,009	0	0	0	0	0	0	55,203,009	0	0
4.2 Reinsurance assumed.....	0	0	0	0	0	0	0	0	0	0
4.3 Reinsurance ceded.....	0	0	0	0	0	0	0	0	0	0
4.4 Net.....	55,203,009	0	0	0	0	0	0	55,203,009	0	0

## UNDERWRITING AND INVESTMENT EXHIBIT

### PART 2B - ANALYSIS OF CLAIMS UNPAID - PRIOR YEAR - NET OF REINSURANCE

Line of Business	Claims Paid During the Year		Claim Reserve and Claim Liability December 31 of Current Year		5  Claims Incurred in Prior Years (Columns 1 + 3)	6  Estimated Claim Reserve and Claim Liability December 31 of Prior Year
	1  On Claims Incurred Prior to January 1 of Current Year	2  On Claims Incurred During the Year	3  On Claims Unpaid December 31 of Prior Year	4  On Claims Incurred During the Year		
1. Comprehensive (hospital and medical).....					0	
2. Medicare Supplement.....					0	
3. Dental only.....					0	
4. Vision only.....					0	
5. Federal Employees Health Benefits Plan.....					0	
6. Title XVIII - Medicare.....					0	
7. Title XIX - Medicaid.....	48,825,096	498,424,312	2,115,606	53,087,403	50,940,702	61,697,797
8. Other health.....					0	
9. Health subtotal (Lines 1 to 8).....	48,825,096	498,424,312	2,115,606	53,087,403	50,940,702	61,697,797
10. Healthcare receivables (a).....					0	
11. Other non-health.....					0	
12. Medical incentive pools and bonus amounts.....	16,615,442	4,183,988	7,223,169	10,404,170	23,838,611	16,643,394
13. Totals (Lines 9 - 10 + 11 + 12).....	65,440,538	502,608,300	9,338,775	63,491,573	74,779,313	78,341,191

(a) Excludes \$.....0 loans or advances to providers not yet expensed.

**UNDERWRITING AND INVESTMENT EXHIBIT**  
**PART 2C - DEVELOPMENT OF PAID AND INCURRED CLAIMS**  
 (000 Omitted)

**SECTION A - PAID HEALTH CLAIMS - GRAND TOTAL**

Year in Which Losses Were Incurred	Cumulative Net Amounts Paid				
	1 2015	2 2016	3 2017	4 2018	5 2019
1. Prior.....					
2. 2015.....	120,710	41,847	165,655	166,105	166,806
3. 2016.....	XXX	229,471	292,716	294,609	294,229
4. 2017.....	XXX	XXX	394,720	459,618	461,820
5. 2018.....	XXX	XXX	XXX	422,643	472,371
6. 2019.....	XXX	XXX	XXX	XXX	547,249

**SECTION B - INCURRED HEALTH CLAIMS - GRAND TOTAL**

Year in Which Losses Were Incurred	Sum of Cumulative Net Amount Paid and Claim Liability, Claim Reserve and Medical Incentive Pool and Bonuses Outstanding at End of Year				
	1 2015	2 2016	3 2017	4 2018	5 2019
1. Prior.....					
2. 2015.....	120,710	41,847	166,107	166,827	166,806
3. 2016.....	XXX	229,471	300,497	301,956	303,771
4. 2017.....	XXX	XXX	470,909	474,378	474,812
5. 2018.....	XXX	XXX	XXX	495,336	499,130
6. 2019.....	XXX	XXX	XXX	XXX	562,538

12.GT

**SECTION C - INCURRED YEAR HEALTH CLAIM AND CLAIM ADJUSTMENT EXPENSE RATIO - GRAND TOTAL**

Years in Which Premiums were Earned and Claims were Incurred	1 Premiums Earned	2 Claim Payments	3 Claim Adjustment Expense Payments	4 Percent (Col. 3/2)	5 Claim and Claim Adjustment Expense Payments (Col. 2 + 3)	6 Percent (Col. 5/1)	7 Claims Unpaid	8 Unpaid Claim Adjustment Expense	9 Total Claims and Claims Adjustment Expense Incurred (Col. 5 + 7 + 8)	10 Percent (Col. 9/1)
1. 2015.....	193,401	166,806	1,668	1.0	168,474	87.1	-	-	168,474	87.1
2. 2016.....	249,582	294,229	2,942	1.0	297,171	119.1	1,815	-	298,986	119.8
3. 2017.....	541,682	461,820	4,618	1.0	466,438	86.1	434	-	466,872	86.2
4. 2018.....	570,653	472,371	4,724	1.0	477,095	83.6	3,794	-	480,889	84.3
5. 2019.....	613,780	490,399	4,904	1.0	495,303	80.7	66,787	448	562,538	91.7

**Underwriting and Investment Ex. - Pt. 2C - Development of Paid Health Claims  
NONE**

**Underwriting and Investment Ex. - Pt. 2C - Development of Incurred Health Claims  
NONE**

**Underwriting and Investment Ex. - Pt. 2C - Development Ratio Incurred Year Health Claims  
NONE**

**Underwriting and Investment Ex. - Pt. 2C - Development of Paid Health Claims  
NONE**

**Underwriting and Investment Ex. - Pt. 2C - Development of Incurred Health Claims  
NONE**

**Underwriting and Investment Ex. - Pt. 2C - Development Ratio Incurred Year Health Claims  
NONE**

**Underwriting and Investment Ex. - Pt. 2C - Development of Paid Health Claims  
NONE**

**Underwriting and Investment Ex. - Pt. 2C - Development of Incurred Health Claims  
NONE**

**Underwriting and Investment Ex. - Pt. 2C - Development Ratio Incurred Year Health Claims  
NONE**

**Underwriting and Investment Ex. - Pt. 2C - Development of Paid Health Claims  
NONE**

**Underwriting and Investment Ex. - Pt. 2C - Development of Incurred Health Claims  
NONE**

**Underwriting and Investment Ex. - Pt. 2C - Development Ratio Incurred Year Health Claims  
NONE**

**Underwriting and Investment Ex. - Pt. 2C - Development of Paid Health Claims  
NONE**

**Underwriting and Investment Ex. - Pt. 2C - Development of Incurred Health Claims  
NONE**

**Underwriting and Investment Ex. - Pt. 2C - Development Ratio Incurred Year Health Claims  
NONE**

**Underwriting and Investment Ex. - Pt. 2C - Development of Paid Health Claims  
NONE**

**Underwriting and Investment Ex. - Pt. 2C - Development of Incurred Health Claims  
NONE**

**Underwriting and Investment Ex. - Pt. 2C - Development Ratio Incurred Year Health Claims  
NONE**

**UNDERWRITING AND INVESTMENT EXHIBIT**  
**PART 2C - DEVELOPMENT OF PAID AND INCURRED CLAIMS**  
(\$000 Omitted)

**SECTION A - PAID HEALTH CLAIMS - TITLE XIX - MEDICAID**

Year in Which Losses Were Incurred	Cumulative Net Amounts Paid				
	1 2015	2 2016	3 2017	4 2018	5 2019
1. Prior.....					
2. 2015.....	120,710	41,847	165,655	166,105	166,806
3. 2016.....	XXX	229,471	292,716	294,609	294,229
4. 2017.....	XXX	XXX	394,720	459,618	461,820
5. 2018.....	XXX	XXX	XXX	422,643	472,371
6. 2019.....	XXX	XXX	XXX	XXX	547,249

**SECTION B - INCURRED HEALTH CLAIMS - TITLE XIX - MEDICAID**

12.XI

Year in Which Losses Were Incurred	Sum of Cumulative Net Amount Paid and Claim Liability, Claim Reserve and Medical Incentive Pool and Bonuses Outstanding at End of Year				
	1 2015	2 2016	3 2017	4 2018	5 2019
1. Prior.....					
2. 2015.....	120,710	41,847	166,107	166,827	166,806
3. 2016.....	XXX	229,471	300,497	301,956	303,771
4. 2017.....	XXX	XXX	470,909	474,378	474,812
5. 2018.....	XXX	XXX	XXX	495,336	499,130
6. 2019.....	XXX	XXX	XXX	XXX	562,538

**SECTION C - INCURRED YEAR HEALTH CLAIM AND CLAIM ADJUSTMENT EXPENSE RATIO - TITLE XIX - MEDICAID**

Years in Which Premiums were Earned and Claims were Incurred	1 Premiums Earned	2 Claim Payments	3 Claim Adjustment Expense Payments	4 Percent (Col. 3/2)	5 Claim and Claim Adjustment Expense Payments (Col. 2 + 3)	6 Percent (Col. 5/1)	7 Claims Unpaid	8 Unpaid Claim Adjustment Expenses	9 Total Claims and Claims Adjustment Expense Incurred (Col. 5 + 7 + 8)	10 Percent (Col. 9/1)
1. 2015.....	193,401	166,806	1,668	1.0	168,474	87.1	-	-	168,474	87.1
2. 2016.....	249,582	294,229	2,942	1.0	297,171	119.1	1,815	-	298,986	119.8
3. 2017.....	541,682	461,820	4,618	1.0	466,438	86.1	434	-	466,872	86.2
4. 2018.....	570,653	472,371	4,724	1.0	477,095	83.6	3,794	-	480,889	84.3
5. 2019.....	613,780	547,249	4,904	0.9	552,153	90.0	66,787	448	619,388	100.9

**Underwriting and Investment Ex. - Pt. 2C - Development of Paid Health Claims  
NONE**

**Underwriting and Investment Ex. - Pt. 2C - Development of Incurred Health Claims  
NONE**

**Underwriting and Investment Ex. - Pt. 2C - Development Ratio Incurred Year Health Claims  
NONE**

**Underwriting and Investment Ex. - Pt. 2D - Aggregate Reserve for A&H Contracts Only  
NONE**

**UNDERWRITING AND INVESTMENT EXHIBIT**

**PART 3 - ANALYSIS OF EXPENSES**

	Claim Adjustment Expenses		3 General Administrative Expenses	4 Investment Expenses	5 Total
	1 Cost Containment Expenses	2 Other Claim Adjustment Expenses			
1. Rent (\$.....0 for occupancy of own building).....			986,372		986,372
2. Salaries, wages and other benefits.....			39,201,738		39,201,738
3. Commissions (less \$.....0 ceded plus \$.....0 assumed).....			3,907,249		3,907,249
4. Legal fees and expenses.....			1,709,678		1,709,678
5. Certifications and accreditation fees.....			80,461		80,461
6. Auditing, actuarial and other consulting services.....			2,354,998		2,354,998
7. Traveling expenses.....			144,667		144,667
8. Marketing and advertising.....			2,258,526		2,258,526
9. Postage, express and telephone.....			1,587,274		1,587,274
10. Printing and office supplies.....			88,199		88,199
11. Occupancy, depreciation and amortization.....			1,566,621		1,566,621
12. Equipment.....			6,645		6,645
13. Cost or depreciation of EDP equipment and software.....					0
14. Outsourced services including EDP, claims, and other services.....					0
15. Boards, bureaus and association fees.....					0
16. Insurance, except on real estate.....			192,404		192,404
17. Collection and bank service charges.....					0
18. Group service and administration fees.....					0
19. Reimbursements by uninsured plans.....					0
20. Reimbursements from fiscal intermediaries.....					0
21. Real estate expenses.....			490,467		490,467
22. Real estate taxes.....			42,210		42,210
23. Taxes, licenses and fees:					
23.1 State and local insurance taxes.....					0
23.2 State premium taxes.....					0
23.3 Regulatory authority licenses and fees.....					0
23.4 Payroll taxes.....					0
23.5 Other (excluding federal income and real estate taxes).....			247,848		247,848
24. Investment expenses not included elsewhere.....					0
25. Aggregate write-ins for expenses.....	0	0	5,433,840	0	5,433,840
26. Total expenses incurred (Lines 1 to 25).....	0	0	60,299,197	0	(a) 60,299,197
27. Less expenses unpaid December 31, current year.....			20,205,757		20,205,757
28. Add expenses unpaid December 31, prior year.....			1,146,606		1,146,606
29. Amounts receivable relating to uninsured plans, prior year.....					0
30. Amounts receivable relating to uninsured plans, current year.....					0
31. Total expenses paid (Lines 26 minus 27 plus 28 minus 29 plus 30).....	0	0	41,240,046	0	41,240,046

**DETAILS OF WRITE-INS**

2501. Public & Provider Relations.....			208,366		208,366
2502. Data Process, Special Projects & Other Expenses.....			4,152,657		4,152,657
2503. Accounts Receivable Write Off.....			1,072,817		1,072,817
2598. Summary of remaining write-ins for Line 25 from overflow page.....	0	0	0	0	0
2599. TOTALS (Lines 2501 through 2503 plus 2598) (Line 25 above).....	0	0	5,433,840	0	5,433,840

(a) Includes management fees of \$.....0 to affiliates and \$.....0 to non-affiliates.



## EXHIBIT OF NET INVESTMENT INCOME

	1 Collected During Year	2 Earned During Year
1. U.S. government bonds.....	(a).....238,205	.....218,998
1.1 Bonds exempt from U.S. tax.....	(a).....	.....
1.2 Other bonds (unaffiliated).....	(a).....917,173	.....962,692
1.3 Bonds of affiliates.....	(a).....	.....
2.1 Preferred stocks (unaffiliated).....	(b).....	.....
2.11 Preferred stocks of affiliates.....	(b).....	.....
2.2 Common stocks (unaffiliated).....	.....	.....
2.21 Common stocks of affiliates.....	.....	.....
3. Mortgage loans.....	(c).....	.....
4. Real estate.....	(d).....	.....
5. Contract loans.....	.....	.....
6. Cash, cash equivalents and short-term investments.....	(e).....442,209	.....431,416
7. Derivative instruments.....	(f).....	.....
8. Other invested assets.....	.....	.....
9. Aggregate write-ins for investment income.....	.....0	.....520,577
10. Total gross investment income.....	.....1,597,587	.....2,133,683
11. Investment expenses.....	.....	(g).....
12. Investment taxes, licenses and fees, excluding federal income taxes.....	.....	(g).....
13. Interest expense.....	.....	(h).....
14. Depreciation on real estate and other invested assets.....	.....	(i).....0
15. Aggregate write-ins for deductions from investment income.....	.....	.....0
16. Total deductions (Lines 11 through 15).....	.....	.....0
17. Net investment income (Line 10 minus Line 16).....	.....	.....2,133,683

### DETAILS OF WRITE-INS

0901. Other Investment Income.....		520,577
0902. ....		
0903. ....		
0998. Summary of remaining write-ins for Line 9 from overflow page.....	0	0
0999. Totals (Lines 0901 through 0903 plus 0998) (Line 9 above).....	0	520,577
1501. ....		
1502. ....		
1503. ....		
1598. Summary of remaining write-ins for Line 15 from overflow page.....		0
1599. Totals (Lines 1501 through 1503 plus 1598) (Line 15 above).....		0

- (a) Includes \$.....78,761 accrual of discount less \$.....92,783 amortization of premium and less \$.....27,053 paid for accrued interest on purchases.
- (b) Includes \$.....0 accrual of discount less \$.....0 amortization of premium and less \$.....0 paid for accrued dividends on purchases.
- (c) Includes \$.....0 accrual of discount less \$.....0 amortization of premium and less \$.....0 paid for accrued interest on purchases.
- (d) Includes \$.....0 for company's occupancy of its own buildings; and excludes \$.....0 interest on encumbrances.
- (e) Includes \$.....388,399 accrual of discount less \$.....4,213 amortization of premium and less \$.....7,139 paid for accrued interest on purchases.
- (f) Includes \$.....0 accrual of discount less \$.....0 amortization of premium.
- (g) Includes \$.....0 investment expenses and \$.....0 investment taxes, licenses and fees, excluding federal income taxes, attributable to segregated and Separate Accounts.
- (h) Includes \$.....0 interest on surplus notes and \$.....0 interest on capital notes.
- (i) Includes \$.....0 depreciation on real estate and \$.....0 depreciation on other invested assets.

## EXHIBIT OF CAPITAL GAINS (LOSSES)

	1 Realized Gain (Loss) on Sales or Maturity	2 Other Realized Adjustments	3 Total Realized Capital Gain (Loss) (Columns 1 + 2)	4 Change in Unrealized Capital Gain (Loss)	5 Change in Unrealized Foreign Exchange Capital Gain (Loss)
1. U.S. government bonds.....			.0		
1.1 Bonds exempt from U.S. tax.....			.0		
1.2 Other bonds (unaffiliated).....	(1,910)		(1,910)		
1.3 Bonds of affiliates.....			.0		
2.1 Preferred stocks (unaffiliated).....			.0		
2.11 Preferred stocks of affiliates.....			.0		
2.2 Common stocks (unaffiliated).....			.0		
2.21 Common stocks of affiliates.....			.0		
3. Mortgage loans.....			.0		
4. Real estate.....			.0		
5. Contract loans.....			.0		
6. Cash, cash equivalents and short-term investments.....	31		31		
7. Derivative instruments.....			.0		
8. Other invested assets.....			.0		
9. Aggregate write-ins for capital gains (losses).....	.0	.0	.0	.0	.0
10. Total capital gains (losses).....	(1,879)	.0	(1,879)	.0	.0

### DETAILS OF WRITE-INS

0901. ....			.0		
0902. ....			.0		
0903. ....			.0		
0998. Summary of remaining write-ins for Line 9 from overflow page.....	.0	.0	.0	.0	.0
0999. Totals (Lines 0901 through 0903 plus 0998) (Line 9 above).....	.0	.0	.0	.0	.0

**EXHIBIT OF NONADMITTED ASSETS**

	1 Current Year Total Nonadmitted Assets	2 Prior Year Total Nonadmitted Assets	3 Change in Total Nonadmitted Assets (Col. 2 - Col. 1)
1. Bonds (Schedule D).....			0
2. Stocks (Schedule D):			
2.1 Preferred stocks.....			0
2.2 Common stocks.....			0
3. Mortgage loans on real estate (Schedule B):			
3.1 First liens.....			0
3.2 Other than first liens.....			0
4. Real estate (Schedule A):			
4.1 Properties occupied by the company.....			0
4.2 Properties held for the production of income.....			0
4.3 Properties held for sale.....			0
5. Cash (Schedule E-Part 1), cash equivalents (Schedule E-Part 2) and short-term investments (Schedule DA).....			0
6. Contract loans.....			0
7. Derivatives (Schedule DB).....			0
8. Other invested assets (Schedule BA).....			0
9. Receivables for securities.....			0
10. Securities lending reinvested collateral assets (Schedule DL).....			0
11. Aggregate write-ins for invested assets.....	263,304	(14,008)	(277,312)
12. Subtotals, cash and invested assets (Lines 1 to 11).....	263,304	(14,008)	(277,312)
13. Title plants (for Title insurers only).....			0
14. Investment income due and accrued.....		1,072,817	1,072,817
15. Premiums and considerations:			
15.1 Uncollected premiums and agents' balances in the course of collection.....		6,701,700	6,701,700
15.2 Deferred premiums, agents' balances and installments booked but deferred and not yet due.....			0
15.3 Accrued retrospective premiums and contracts subject to redetermination.....			0
16. Reinsurance:			
16.1 Amounts recoverable from reinsurers.....			0
16.2 Funds held by or deposited with reinsured companies.....			0
16.3 Other amounts receivable under reinsurance contracts.....			0
17. Amounts receivable relating to uninsured plans.....			0
18.1 Current federal and foreign income tax recoverable and interest thereon.....			0
18.2 Net deferred tax asset.....	2,299,496	3,419	(2,296,077)
19. Guaranty funds receivable or on deposit.....			0
20. Electronic data processing equipment and software.....			0
21. Furniture and equipment, including health care delivery assets.....			0
22. Net adjustment in assets and liabilities due to foreign exchange rates.....			0
23. Receivables from parent, subsidiaries and affiliates.....			0
24. Health care and other amounts receivable.....			0
25. Aggregate write-ins for other-than-invested assets.....	0	0	0
26. Total assets excluding Separate Accounts, Segregated Accounts and Protected Cell Accounts (Lines 12 through 25).....	2,562,800	7,763,928	5,201,128
27. From Separate Accounts, Segregated Accounts and Protected Cell Accounts.....			0
28. TOTALS (Lines 26 and 27).....	2,562,800	7,763,928	5,201,128

**DETAILS OF WRITE-INS**

1101. Advance to Providers.....	50,480	(14,008)	(64,488)
1102. Prepaid Expenses.....	212,824		(212,824)
1103. ....			0
1198. Summary of remaining write-ins for Line 11 from overflow page.....	0	0	0
1199. Totals (Lines 1101 through 1103 plus 1198) (Line 11 above).....	263,304	(14,008)	(277,312)
2501. ....			0
2502. ....			0
2503. ....			0
2598. Summary of remaining write-ins for Line 25 from overflow page.....	0	0	0
2599. Totals (Lines 2501 through 2503 plus 2598) (Line 25 above).....	0	0	0

**EXHIBIT 1 - ENROLLMENT BY PRODUCT TYPE FOR HEALTH BUSINESS ONLY**

Source of Enrollment	Total Members at End of					6 Current Year Member Months
	1 Prior Year	2 First Quarter	3 Second Quarter	4 Third Quarter	5 Current Year	
1. Health maintenance organizations.....	276,428	282,275	279,221	261,366	257,189	3,256,103
2. Provider service organizations.....						
3. Preferred provider organizations.....						
4. Point of service.....						
5. Indemnity only.....						
6. Aggregate write-ins for other lines of business.....	0	0	0	0	0	0
7. Total.....	276,428	282,275	279,221	261,366	257,189	3,256,103

**DETAILS OF WRITE-INS**

0601. ....						
0602. ....						
0603. ....						
0698. Summary of remaining write-ins for Line 6 from overflow page.....	0	0	0	0	0	0
0699. Totals (Lines 0601 through 0603 plus 0698) (Line 6 above).....	0	0	0	0	0	0

**NOTES TO FINANCIAL STATEMENTS****Note 1 – Summary of Significant Accounting Policies and Going Concern**

## A. Accounting Practices

	SSAP #	F/S Page	F/S Line #	2019	2018
<b>NET INCOME</b>					
(1) Company state basis (Page 4, Line 32, Columns 2 & 3)	XXX	XXX	XXX	\$ (6,307,879)	\$ 11,958,156
(2) State Prescribed Practices that are an increase/(decrease) from NAIC SAP				\$	\$
(3) State Permitted Practices that are an increase/(decrease) from NAIC SAP				\$	\$
(4) NAIC SAP (1 – 2 – 3 = 4)	XXX	XXX	XXX	\$ (6,307,879)	\$ 11,958,156
<b>SURPLUS</b>					
(5) Company state basis (Page 3, Line 33, Columns 3 & 4)	XXX	XXX	XXX	\$ 49,693,972	\$ 50,946,441
(6) State Prescribed Practices that are an increase/(decrease) from NAIC SAP				\$	\$
(7) State Permitted Practices that are an increase/(decrease) from NAIC SAP				\$	\$
(8) NAIC SAP (5 – 6 – 7 = 8)	XXX	XXX	XXX	\$ 49,693,972	\$ 50,946,441

## B. Use of Estimates in the Preparation of the Financial Statement

The preparation of the statutory financial statements requires management of the Company to make estimates and assumptions relating to the reported amounts included in the statutory financial statements and accompanying notes. The most significant items subject to estimates and assumptions are the actuarial determination for medical claims liabilities, and the Company's estimated receivable from ASES. Actual results could differ from these estimates.

## C. Accounting Policy

**Organization**

MMM Multi Health, LLC (the Company), previously known as Red Médica de Puerto Rico, Inc., was organized under the laws of the Commonwealth of Puerto Rico on December 28, 2000 and is a wholly owned subsidiary of MMM Holdings, LLC (Holdings or Parent Company), a corporation organized under the laws of the Commonwealth of Puerto Rico. Holdings is a wholly owned subsidiary of InnoVaCare Inc., a corporation organized under the laws of the Commonwealth of Puerto Rico.

The Company signed contracts based on a risk based model with the Puerto Rico Health Insurance Administration/Administración de Seguros de Salud de Puerto Rico ("ASES") under the Government Health Plan Program ("GHP" or "Reforma") to provide managed care health insurance benefits for Medicaid, Children's Health Insurance Program and other eligible persons in the Northeast and Southeast regions of Puerto Rico for the period April 1, 2015 through June 30, 2017 ("2015 GHP Contracts"), and these contracts were subsequently extended until October 31, 2018. In September 2018, Multi Health and ASES signed a new GHP contract for the period November 1, 2018 through September 30, 2021, under which Multi Health will be able to offer coverage island-wide.

**Basis of Presentation**

The accompanying statutory financial statements of the Company have been prepared in accordance with accounting practices prescribed or permitted by the Commissioner of Insurance of the Commonwealth of Puerto Rico (the Commissioner of Insurance), which is a comprehensive basis of accounting other than U.S. generally accepted accounting principles. The Commissioner of Insurance has adopted the National Association of Insurance Commissioners' statutory accounting practices (NAIC SSAP), as the basis of its statutory accounting practices, as long as they do not contradict the provisions of the Insurance Code of the Commonwealth of Puerto Rico (the Insurance Code) or the Circular Letters issued by the Commissioner of Insurance.

The Commissioner of Insurance has the right to permit other specific practices that may deviate from prescribed practices. Prescribed statutory accounting practices (SSAP) include a variety of publications of the National Association of Insurance Commissioners (NAIC) including its codification initiative contained in its *Accounting Practices and Procedures Manual*, as well as state laws, regulations, and general administrative rules. Permitted statutory accounting practices encompass all accounting practices not so prescribed.

**Recognition of Premium Revenue**

Premium revenue is recognized as revenue over the period in which service or benefits are obligated to be provided. Substantially, all revenues recognized by the Company are received from the ASES. Revenues are recognized ratably over the period of coverage based on anticipated ASES reimbursement rates, number of enrollees, and expected Medicaid eligibility. Actual amounts received from ASES are subject to adjustment based on subsequent review of members' eligibility. An estimate is made of such retroactive adjustments based on historical trends, premiums billed, number of members, expected eligibility, and other information. Retroactive membership adjustments result from enrollment changes not yet processed, or not yet reported by ASES.

**Cash, Cash Equivalents, and Short-Term Investments**

The Company considers all highly liquid investments with original maturities of three months or less to be cash equivalents. At December 31, 2019 and 2018 the Company's cash equivalents amounted to approximately \$14,974,000 and \$1,770,000, respectively. Short-term investments are defined as short-term highly liquid investments with remaining maturities of one year or less at the time of acquisition (excluding those investments classified as cash equivalents). Short-term investments having an original maturity of less than one year are stated at cost. At December 31, 2019 and 2018, cash and short-term investments consisted of cash deposited in financial institutions and money market funds amounting to approximately \$70,656,000 and \$73,973,000, respectively, of which approximately \$15,496,000 represented short-term investments at December 31, 2018. There were no short-term investments at December 31, 2019. In addition, the Company has a certificate deposit amounted to \$600,000 as of December 31, 2019 and 2018, deposited with the Puerto Rico Commissioner of Insurance in order to comply with the deposit requirements of the Insurance Code. This amount cannot be used in the Company's operations unless previously approved by the Puerto Rico Commissioner of Insurance.

---

## NOTES TO FINANCIAL STATEMENTS

---

### **Investment Securities**

Bonds and other debt securities, and equity securities are reported in accordance with rules promulgated by NAIC. Bonds that are designated highest quality, NAIC designation 1 and 2, are reported at amortized cost, and bonds that are classified as NAIC designation 3 or lower are reported at lower of amortized cost or fair value. Other debt securities eligible for amortization under such rules and nonredeemable preferred stocks are stated at amortized cost. Equity securities are carried at estimated fair value. Adjustments reflecting the unrealized appreciation or depreciation of equity securities are shown as a component of surplus, net of tax and are not included in the determination of the net gain (loss) from operations.

Realized gains or losses on the sale of investments are included in operations and are derived using the specific-identification method for determining the cost of securities sold. Interest and dividend income is recognized when earned.

The Company applies the provisions of SSAP No. 43R, *Loan-Backed and Structured Securities*, which requires insurers to separate other-than-temporary impairments between interest and noninterest-related declines in the value of all loan-backed and structured securities.

A decline in the fair value of any security below cost that is deemed to be other-than-temporary impairment (OTTI) results in a reduction in carrying amount to fair value. The impairment is charged to operations and a new cost basis for the security is established. To determine whether impairment is other-than-temporary, the Company considers all available information relevant to the recoverability of the security, including past events, current conditions, and reasonable and supportable forecasts when developing an estimate of cash flows expected to be collected. Evidence considered in this assessment includes the reasons for the impairment, the severity and duration of the impairment, changes in value subsequent to year-end and forecasted performance of the investee.

Premiums and discounts on bonds and other debt securities are amortized or accreted over the life of the related security as an adjustment to yield using the effective-interest method. Such amortization and accretion is included in investment income in the accompanying statutory statements of revenue and expenses.

The Company's investments are exposed to three primary sources of risk: credit, interest rate, and liquidity risk. The financial statement risks, stemming from such investment risks, are those associated with the determination of estimated fair values, the diminished ability to sell certain investments in times of strained market conditions, the recognition of impairments and the recognition of income on certain investments. These financial statement risks may have a material effect on the amounts presented within the statutory financial statements.

### **Fair Value Measurements**

The Company follows the guidance in SSAP No. 100, *Fair Value Measurements*, for fair value measurements of financial assets and financial liabilities that are recognized or disclosed at fair value in the statutory financial statements on a recurring basis. SSAP No. 100 defines fair value as the price that would be received to sell an asset or paid to transfer a liability in an orderly transaction between market participants at the measurement date and also establishes a framework for measuring fair value and expands disclosures about fair value measurements.

The carrying amounts of cash and cash equivalents, short-term investments, premium receivables, net, other receivables, and accounts payable, and accrued expenses approximate fair value because of the short-term nature of these instruments that should be collected or paid within 12 months after year-end.

The Company utilizes valuation techniques that maximize the use of observable inputs and minimizes the use unobservable inputs. Additional information on the fair value of investments is included in note 4.

### **Medical Claim Liabilities and Medical Costs and Claims**

Medical claim liabilities are accrued as services are rendered, including claims in process and other medical liabilities and an estimate for claims incurred but not yet reported (IBNR). The IBNR is determined based upon an actuarial analysis of the Company's historical claim payment patterns, management estimates, and other statistics. In addition, the Company contracts with various service providers, which are compensated based on a capitation basis. Expenses related to these providers, which are based in part on estimates, are recorded in the period in which the related services are rendered.

The medical claim liabilities are based on estimates and, while management believes that the amounts are adequate, the ultimate liability may be in excess of or less than the amounts provided. The methods for making such estimates and for establishing the resulting liability are continually reviewed, and any adjustments are reflected in the statutory statements of revenue and expenses of the current period. Other medical claims liabilities include medical costs disputes based upon an analysis of potential outcomes, assuming a combination of litigation and settlement strategies. The actual results could differ materially from the amount recorded in the statutory financial statements of the Company.

Medical costs and claims consist of claim payments, capitation payments, risk-sharing payments, compensation to doctors and pharmacy costs, as well as estimates of future payments of claims provided for services rendered prior to the end of the reporting period. Capitation payments represent monthly contractual fees disbursed to physicians and other providers who are responsible for providing medical care to members. Risk-sharing payments represent amounts paid under risk-sharing arrangements with providers, including independent physician associations. Pharmacy costs represent payments for members' prescription drug benefits.

Premiums the Company pays to reinsurers are reported as an off-set to premiums, and related reinsurance recoveries are reported as reductions from medical expenses.

### **Income Taxes**

Income taxes are accounted for in accordance with SSAP No. 101, *Income Taxes, A Replacement of SSAP No. 10R and SSAP No. 10* (SSAP 101). Deferred tax assets and liabilities are recognized for the future tax consequences attributable to differences between the financial statement carrying amounts of existing assets and liabilities and their respective tax bases and operating loss and tax credit carry forwards. Deferred tax assets and liabilities are measured using enacted tax rates expected to apply to taxable income in the years in which those temporary differences are expected to be recovered or settled.

Under SSAP 101, the amount permitted to be recognized is more restrictive and, the effect on deferred tax assets and liabilities of a change in tax rates is recognized in the accompanying statutory statement of changes in capital and surplus in the period that includes the enactment date.

Under SSAP 101, gross deferred tax assets generally are admitted to the extent the Company's income taxes paid in prior years can be recovered through loss carrybacks; plus the amounts determined by applying the *Realization Threshold Limitation Table – RBC Reporting Entities (RBC Reporting Entity)*; plus any remaining deferred tax assets that can be offset against existing gross deferred tax liabilities.

**NOTES TO FINANCIAL STATEMENTS**

The Company reviews its gross deferred tax assets for realizability and in assessing the total deferred tax assets that will be realized management considers historical taxable income, projected future taxable income, applicable tax strategies, and the expected timing of the reversals of existing temporary differences. A valuation allowance is provided when it is more likely than not that some portion or all of the gross deferred tax assets will not be realized. Management believes, it is more likely than not the Company will be able to realize all gross deferred tax assets and therefore, no valuation allowance was established as of December 31, 2019 and 2018.

The Company is organized as a single member Limited Liability Company (LLC) and elected to be treated as a partnership for Puerto Rico tax purposes pursuant to the provisions of Sections 1034.04(b)(6) and 1072.01 of the Puerto Rico tax code. Therefore, the Company is not considered a taxable entity and the Company's net taxable income or loss will be included as part of InnovaCare's results of operations, pursuant to Section 1071.01 of the Puerto Rico tax code. The Company entered into a tax sharing agreement to provide Holdings with the funds necessary to satisfy the Company's share of income taxes. Income tax payments are allocated to the Company based on their taxable income or loss as if had been taxed as a corporation instead of a partnership.

The Company accounts for uncertainty in income taxes by prescribing a recognition threshold and measurement attribute for the financial statement recognition and measurement of a tax position taken or expected to be taken in a tax return. The Company recognizes interest and penalties relating to uncertain tax positions in income tax expense. For the years ended December 31, 2019 and 2018 there were no unrecognized tax benefits.

D. Going Concern - Not applicable.

**Note 2 – Accounting Changes and Correction of Errors** - Not applicable.

**Note 3 – Business Combinations and Goodwill** - Not applicable.

A. Statutory Purchase Method - Not applicable.

B. Statutory Merger - Not applicable.

C. Assumption Reinsurance - Not applicable.

D. Impairment Loss - Not applicable.

**Note 4 – Discontinued Operations** - Not applicable.

**Note 5 – Investments**

A. Mortgage Loans, including Mezzanine Real Estate Loans - Not applicable.

B. Debt Restructuring - Not applicable.

C. Reverse Mortgages - Not applicable.

D. Loan-Backed Securities - Not applicable.

E. Dollar Repurchase Agreements and/or Securities Lending Transactions - Not applicable.

F. Repurchase Agreements Transactions Accounted for as Secured Borrowing - Not applicable.

G. Reverse Repurchase Agreements Transactions Accounted for as Secured Borrowing - Not applicable.

H. Repurchase Agreements Transactions Accounted for as a Sale - Not applicable.

I. Reverse Repurchase Agreements Transactions Accounted for as a Sale - Not applicable.

J. Real Estate - Not applicable.

K. Low-Income Housing Tax Credits (LIHTC) - Not applicable.

L. Restricted Assets

Restricted Asset Category	1 Total Gross (Admitted & Nonadmitted) Restricted from Current Year	2 Total Gross (Admitted & Nonadmitted) Restricted from Prior Year	3 Increase (Decrease) (1 minus 2)	4 Total Current Year Nonadmitted Restricted	5 Total Current Year Admitted Restricted (1 minus 4)	6 Gross (Admitted & Nonadmitted) Restricted to Total Assets (a)	7 Additional Restricted to Total Admitted Assets (b)
a. Subject to contractual obligation for which liability is not shown	\$	\$	\$	\$	\$	%	%
b. Collateral held under security lending arrangements						%	%
c. Subject to repurchase agreements						%	%
d. Subject to reverse repurchase agreements						%	%
e. Subject to dollar repurchase agreements						%	%
f. Subject to dollar reverse repurchase agreements						%	%
g. Placed under option contracts						%	%
h. Letter stock or securities restricted as to sale –						%	%

**NOTES TO FINANCIAL STATEMENTS**

Restricted Asset Category	1 Total Gross (Admitted & Nonadmitted) Restricted from Current Year	2 Total Gross (Admitted & Nonadmitted) Restricted from Prior Year	3 Increase (Decrease) (1 minus 2)	4 Total Current Year Nonadmitted Restricted	5 Total Current Year Admitted Restricted (1 minus 4)	6 Gross (Admitted & Nonadmitted) Restricted to Total Assets (a)	7 Additional Restricted to Total Admitted Assets (b)
Restricted Asset Category excluding FHLB capital stock							
i. FHLB capital stock						%	%
j. On deposit with states						%	%
k. On deposit with other regulatory bodies	600,000	600,000			600,000	%	%
l. Pledged as collateral to FHLB (including assets backing funding agreements)						%	%
m. Pledged as collateral not captured in other categories						%	%
n. Other restricted assets						%	%
o. Total Restricted Assets	\$ 600,000	\$ 600,000	\$	\$	\$ 600,000	%	%

The Insurance Code requires health service organizations authorized to do business in Puerto Rico to make an initial deposit of \$600,000 as a guarantee to the healthcare plan members and healthcare service providers. This amount cannot be used in the Company's operations unless previously approved by the Commissioner of Insurance.

The certificate of deposit of \$600,000 as of December 31, 2019 and 2018 was deposited with the Commissioner of Insurance to comply with the deposit requirements of the Insurance Code. Such deposits are included as part of the Company's admitted assets and liabilities in the accompanying statutory financial statements, as required by the Commissioner of Insurance of the Commonwealth of Puerto Rico.

- M. Working Capital Finance Investments - Not applicable.
- N. Offsetting and Netting of Assets and Liabilities - Not applicable.
- O. 5GI Securities - Not applicable.
- P. Short Sales - Not applicable.
- Q. Prepayment Penalty and Acceleration Fees - Not applicable.

**NOTES TO FINANCIAL STATEMENTS**

## R. Investment Securities

The amortized cost, gross unrealized gains, gross unrealized losses, and estimated fair value of investment securities at December 31, 2019 are as follows:

	2019			
	Amortized cost	Gross unrealized gains	Gross unrealized losses	Estimated fair value
U.S. Treasury securities and obligations of U.S. government agencies, state and authorities	\$ 14,000,561	45,986	(9,701)	14,036,846
Corporate bonds	24,353,585	188,449	(7,584)	24,534,450
Mortgage-backed securities	9,574,676	92,903	(13,846)	9,653,733
Asset-backed securities	6,399,607	23,915	(473)	6,423,049
Collateralized mortgage obligations	2,336,245	43,449	(905)	2,378,789
Total bonds and other debt securities	\$ 56,664,674	394,702	(32,509)	57,026,867

	2018			
	Amortized cost	Gross unrealized gains	Gross unrealized losses	Estimated fair value
U.S. Treasury securities and obligations of U.S. government agencies, state and authorities	\$ 22,858,592	7,934	(208,523)	22,658,003
Foreign government securities	—	—	—	—
Corporate bonds	15,909,830	13,449	(156,045)	15,767,234
Mortgage-backed securities	7,893,464	7,424	(192,806)	7,708,082
Asset-backed securities	4,619,746	1,806	(34,171)	4,587,381
Collateralized mortgage obligations	2,167,353	11,757	(15,328)	2,163,782
Total bonds and other debt securities	\$ 53,448,985	42,370	(606,873)	52,884,482

Proceeds from sales of bonds and other debt securities during 2019 and 2018 amounted to approximately \$20,480,000 and \$28,513,000 respectively.

Gross unrealized losses on available for sale investment securities for which other-than-temporary impairments have not been recognized and the estimated fair value of the related securities, aggregated by investment category and length of time that individual securities have been in a continuous unrealized loss position as of December 31, 2019 and 2018 are as follows:

	2019					
	Less than 12 months		12 months or longer		Total	
	Estimated fair value	Gross unrealized losses	Estimated fair value	Gross unrealized losses	Estimated fair value	Gross unrealized losses
U.S. Treasury securities and obligations of U.S. government agencies, state and authorities	\$ —	—	5,661,465	(9,701)	5,661,465	(9,701)
Corporate bonds	2,749,191	(6,871)	500,413	(713)	3,249,604	(7,584)
Mortgage-backed securities	2,301,656	(3,868)	1,482,215	(9,978)	3,783,871	(13,846)
Asset-backed securities	412,347	(80)	110,005	(393)	522,352	(473)
Collateralized mortgage obligation	—	—	386,490	(905)	386,490	(905)
Total	\$ 5,463,194	(10,819)	8,140,588	(21,690)	13,603,782	(32,509)

	2018					
	Less than 12 months		12 months or longer		Total	
	Estimated fair value	Gross unrealized losses	Estimated fair value	Gross unrealized losses	Estimated fair value	Gross unrealized losses
U.S. Treasury securities and obligations of U.S. government agencies, state and authorities	\$ 981,094	(566)	19,148,440	(207,957)	20,129,534	(208,523)
Foreign government securities	—	—	—	—	—	—
Corporate bonds	5,156,649	(45,526)	8,611,387	(110,519)	13,768,036	(156,045)
Mortgage-backed securities	1,686,703	(40,343)	4,064,155	(152,463)	5,750,858	(192,806)
Asset-backed securities	997,896	(2,056)	3,112,769	(32,115)	4,110,665	(34,171)
Collateralized mortgage obligation	—	—	1,130,121	(15,328)	1,130,121	(15,328)
Total	\$ 8,822,342	(88,491)	36,066,872	(518,382)	44,889,214	(606,873)



## NOTES TO FINANCIAL STATEMENTS

The Company regularly monitors and evaluates the difference between the cost and estimated fair value of investments. For investments with a fair value below cost, the process includes evaluating the length of time and the extent to which cost exceeds fair value, the prospects and financial condition of the issuer, and the Company's intent and ability to retain the investment to allow for recovery in fair value, among other factors. This process is not exact and further requires consideration of risks such as credit and interest rate risks. Consequently, if an investment's cost exceeds its fair value solely due to changes in interest rates, impairment may not be appropriate. If after monitoring and analyzing, the Company determines that a decline in the estimated fair value of any fixed income or equity security below cost is

other than temporary, the carrying amount of the security is reduced to its fair value. The impairment is charged to operations and a new cost basis for the security is established.

The Company has assessed each position for credit and interest risk. The unrealized losses on investment securities as of December 31, 2019 and 2018 were caused principally by interest rate changes. The contractual terms of these investments do not permit the issuer to settle the securities at a price less than the amortized cost of the investment. Because the Company has the ability and intent to hold these securities until a market price recovery or maturity, these investments are not considered other-than-temporarily impaired. In the case of the U.S. Treasury securities and corporate bonds, management of the Company examined the guidance in SSAP No. 26, *Bonds, Excluding Loan-Backed and Structured Securities*, and concluded that the Company has the ability and intent to hold its investment in securities until a market price recovery or maturity. For the mortgage-backed securities, asset-backed securities and collateralized mortgage obligations, management evaluated SSAP No. 43R and concluded that the Company does not intend to sell such security, and it is more likely than not that it will not be required to sell such security prior to the recovery of its amortized cost basis.

The amortized cost and estimated fair value of debt securities at December 31, 2019 by contractual maturity are shown below. Expected maturities will differ from contractual maturities because borrowers may have the right to call or prepay obligations with or without call or prepayment penalties.

	Amortized cost	Estimated fair value
Due in one year or less	\$ 26,490,997	26,508,048
Due after one year through five years	26,510,214	26,712,761
Due after five years through ten years	998,458	997,602
Mortgage and asset backed securities and collateralized mortgage obligations	<u>18,310,528</u>	<u>18,455,571</u>
	<u>\$ 72,310,197</u>	<u>72,673,982</u>

**Note 6 – Joint Ventures, Partnerships and Limited Liability Companies** - Not applicable.

### Note 7 – Investment Income

Components of investment income for the years ended December 31, 2019 and 2018 are as follows:

	2019	2018
Bonds and other debt securities, and certificates of deposit	\$ <u>2,131,804</u>	<u>1,787,009</u>
Total	<u>\$ 2,131,804</u>	<u>1,787,009</u>

For the years ended December 31, 2019 and 2018, net realized gains of \$31 and \$1,923 are included as components of investment income.

**Note 8 – Derivative Instruments** - Not applicable.

### Note 9 – Income Taxes

A. Deferred Tax Assets/(Liabilities)

#### 1. Components of Net Deferred Tax Asset/(Liability)

	2019			2018			Change		
	1 Ordinary	2 Capital	3 (Col 1+2) Total	4 Ordinary	5 Capital	6 (Col 4+5) Total	7 (Col 1-4) Ordinary	8 (Col 2-5) Capital	9 (Col 7+8) Total
a. Gross deferred tax assets	\$ 2,768,428	\$	\$ 2,768,428	\$ 2,913,610	\$	\$ 2,913,610	\$ (145,182)	\$	\$ (145,182)
b. Statutory valuation allowance adjustment									
c. Adjusted gross deferred tax assets (1a-1b)	\$ 2,768,428	\$	\$ 2,768,428	\$ 2,913,610	\$	\$ 2,913,610	\$ (145,182)	\$	\$ (145,182)
d. Deferred tax assets nonadmitted	2,299,496		2,299,496	3,419		3,419	2,296,077		2,296,077
e. Subtotal net	\$ 468,932	\$	\$ 468,932	\$ 2,910,191	\$	\$ 2,910,191	\$ (2,441,259)	\$	\$ (2,441,259)

**NOTES TO FINANCIAL STATEMENTS**

	2019			2018			Change		
	1 Ordinary	2 Capital	3 (Col 1+2) Total	4 Ordinary	5 Capital	6 (Col 4+5) Total	7 (Col 1-4) Ordinary	8 (Col 2-5) Capital	9 (Col 7+8) Total
admitted deferred tax asset (1c-1d)									
f. Deferred tax liabilities									
g. Net admitted deferred tax assets/(net deferred tax liability) (1e-1f)	\$ 468,932	\$	\$ 468,932	\$ 2,910,191	\$	\$ 2,910,191	\$ (2,441,259)	\$	\$ (2,441,259)

## 2. Admission Calculation Components SSAP No. 101

	2019			2018			Change		
	1 Ordinary	2 Capital	3 (Col 1+2) Total	4 Ordinary	5 Capital	6 (Col 4+5) Total	7 (Col 1-4) Ordinary	8 (Col 2-5) Capital	9 (Col 7+8) Total
a. Federal income taxes paid in prior years recoverable through loss carrybacks	\$	\$	\$	\$	\$	\$	\$	\$	\$
b. Adjusted gross deferred tax assets expected to be realized (excluding the amount of deferred tax assets from 2(a) above) after application of the threshold limitation. (The lesser of 2(b)1 and 2(b)2 below)									
1. Adjusted gross deferred tax assets expected to be realized following the balance sheet date	468,932		468,932	2,910,191		2,910,191	(2,441,259)		(2,441,259)
2. Adjusted gross deferred tax assets allowed per limitation threshold	468,932		468,932	2,910,191		2,910,191	(2,441,259)		(2,441,259)
c. Adjusted gross deferred tax assets (excluding the amount of deferred tax assets from 2(a) and 2(b) above) offset by gross deferred tax liabilities									
d. Deferred tax assets admitted as the result of application of SSAP 101. Total (2(a)+2(b)+2(c))	\$ 468,932	\$	\$ 468,932	\$ 2,910,191	\$	\$ 2,910,191	\$ (2,441,259)	\$	\$ (2,441,259)

3. Other Admissibility Criteria - Not Applicable.

4. Impact of Tax Planning Strategies

(a) Determination of adjusted gross deferred tax assets and net admitted deferred tax assets, by tax character as a percentage.

	2019		2018		Change	
	1 Ordinary	2 Capital	3 Ordinary	4 Capital	5 (Col. 1-3) Ordinary	6 (Col. 2-4) Capital
1. Adjusted gross DTAs amount from Note 9A1(c)	\$ 2,768,428	\$	\$ 2,913,610	\$	\$ (145,182)	\$
2. Percentage of adjusted gross DTAs by tax character attributable to the impact of tax planning strategies	%	%	%	%	%	%
3. Net Admitted Adjusted Gross DTAs amount from Note 9A1(e)	\$ 468,932	\$	\$ 2,910,191	\$	\$ (2,441,259)	\$
4. Percentage of net admitted adjusted gross DTAs by tax character admitted because of the impact	%	%	%	%	%	%

**NOTES TO FINANCIAL STATEMENTS**

	2019		2018		Change	
	1 Ordinary	2 Capital	3 Ordinary	4 Capital	5 (Col. 1-3) Ordinary	6 (Col. 2-4) Capital
of tax planning strategies						

B. Deferred Tax Liabilities Not Recognized - Not Applicable.

C. Current and Deferred Income Taxes

## 1. Current Income Tax

	1 2019	2 2018	3 (Col 1-2) Change
a. Federal	\$	\$	\$
b. Foreign	\$	\$	\$
c. Subtotal	\$	\$	\$
d. Federal income tax on net capital gains	\$	\$	\$
e. Utilization of capital loss carry-forwards	\$	\$	\$
f. Other	\$ (617,100)	\$ 7,522,525	\$ (8,139,625)
g. Federal and Foreign income taxes incurred	\$ (617,100)	\$ 7,522,525	\$ (8,139,625)

## 2. Deferred Tax Assets

	1 2019	2 2018	3 (Col 1-2) Change
a. Ordinary:			
1. Discounting of unpaid losses	\$	\$	\$
2. Unearned premium reserve			
3. Policyholder reserves			
4. Investments			
5. Deferred acquisition costs			
6. Policyholder dividends accrual			
7. Fixed assets			
8. Compensation and benefits accrual			
9. Pension accrual			
10. Receivables - nonadmitted	18,930	2,513,137	(2,494,207)
11. Net operating loss carry-forward	2,669,689		2,669,689
12. Tax credit carry-forward			
13. Other (items <=5% and >5% of total ordinary tax assets)	79,809	400,473	(320,664)
Other (items listed individually >5% of total ordinary tax assets)			
99. Subtotal	\$ 2,768,428	\$ 2,913,610	\$ (145,182)
b. Statutory valuation allowance adjustment			
c. Nonadmitted	2,299,496	3,419	2,296,077
d. Admitted ordinary deferred tax assets (2a99-2b-2c)	\$ 468,932	\$ 2,910,191	\$ (2,441,259)
e. Capital:			
1. Investments	\$	\$	\$
2. Net capital loss carry-forward			
3. Real estate			
4. Other (items <=5% and >5% of total capital tax assets)			
Other (items listed individually >5% of total capital tax assets)			
99. Subtotal	\$	\$	\$
f. Statutory valuation allowance adjustment			
g. Nonadmitted			
h. Admitted capital deferred tax assets (2e99-2f-2g)			
i. Admitted deferred tax assets (2d+2h)	\$ 468,932	\$ 2,910,191	\$ (2,441,259)

## 3. Deferred Tax Liabilities

4. Net Deferred Tax Assets/Liabilities (2i - 3c)	\$ 468,932	\$ 2,910,191	\$ (2,441,259)
--	------------	--------------	----------------

D. Reconciliation of Income Tax Rate to Actual Effective Rate Among the more significant book to tax adjustments were the following:

	2019	2018	Change
Deferred tax assets:			
Ordinary:			
Premium receivable	—	2,513,138	(2,513,138)
Net operating loss	2,669,689	—	2,669,689
Other	98,739	397,053	(298,314)
Total deferred tax assets	2,768,428	2,910,191	(141,763)
Nonadmitted	(2,299,496)	—	(2,299,496)
Admitted ordinary deferred tax assets	468,932	2,910,191	(2,441,259)

**NOTES TO FINANCIAL STATEMENTS****E. Operating Loss Carry Forwards and Income Taxes Available for Recoupment**

1. The amounts, origination dates and expiration dates of operating loss and tax credit carry forwards available for tax purposes:

Description (Operating Loss or Tax Credit Carry Forward)	Amounts	Origination Dates	Expiration Dates
Net Operating Loss	\$7,119,170	December 31, 2019	December 31, 2029

2. The following is income tax expense for current year and preceding years that is available for recoupment in the event of future net losses:

Year	Amounts
2019	\$2,669,689

3. The Company's aggregate amount of deposits admitted under Section 6603 of the Internal Revenue Service Code

**F. Consolidated Federal Income Tax Return - Not Applicable.****G. Federal or Foreign Federal Income Tax Loss Contingencies - Not Applicable.****H. Repatriation Transition Tax (RTT) - RTT owed under the TCJA - Not Applicable.****I. Alternative Minimum Tax Credit - Not Applicable.****Note 10 – Information Concerning Parent, Subsidiaries, Affiliates and Other Related Parties****A. Nature of the Relationship Involved**

Holdings provides certain management, infrastructure support, consulting, and implementation services in the operations of the Company and other subsidiaries of Holdings.

**B. Transactions**

For these services, Holdings charges a management fee based on 124% of Holdings monthly operating expenses.

**C. Dollar Amounts of Transactions**

Holdings charged the Company approximately \$59,187,000 and \$52,865,000 during the years ended December 31, 2019 and 2018, respectively, which is included in general and administrative expenses in the accompanying statutory statements of revenues and expenses.

**D. Amounts Due From or To Related Parties**

The amounts due to and due from parent company at December 31, 2019 and 2018 are noninterest-bearing.

**E. Guarantees or Undertakings - Not Applicable.****F. Material Management or Service Contracts and Cost-Sharing Arrangements - Not Applicable.****G. Nature of the Control Relationship - Not Applicable.****H. Amount Deducted from the Value of Upstream Intermediate Entity or Ultimate Parent Owned - Not Applicable.****I. Investments in SCA that Exceed 10% of Admitted Assets - Not Applicable.****J. Investments in Impaired SCAs - Not Applicable.****K. Investment in Foreign Insurance Subsidiary - Not Applicable.****L. Investment in Downstream Noninsurance Holding Company - Not Applicable.****M. All SCA Investments - Not Applicable.****N. Investment in Insurance SCAs - Not Applicable.****O. SCA or SSAP 48 Entity Loss Tracking - Not Applicable.****Note 11 – Debt - Not Applicable.****Note 12 – Retirement Plans, Deferred Compensation, Postemployment Benefits and Compensated Absences and Other Postretirement Benefit Plans - Not Applicable.****Note 13 – Capital and Surplus, Shareholder's Dividend Restrictions and Quasi-Reorganizations****(1) Number of Share and Par or State Value of Each Class**

The Company has 400,000 shares authorized and issued. All shares are Class A shares.

**(2) Dividend Rate, Liquidation Value and Redemption Schedule of Preferred Stock Issues**

The Company has no preferred stock outstanding.

**(3) Dividend Restrictions - Not applicable.**

**NOTES TO FINANCIAL STATEMENTS**

- (4) Dates and Amounts of Dividends Paid - Not applicable.
- (5) Profits that may be Paid as Ordinary Dividends to Stockholders - Not applicable.
- (6) Restrictions Placed on Unassigned Funds (Surplus) - Not applicable.
- (7) Amount of Advances to Surplus not Repaid - Not applicable.
- (8) Amount of Stock Held for Special Purposes - Not applicable.
- (9) Reasons for Changes in Balance of Special Surplus Funds from Prior Period - Not applicable.
- (10) The Portion of Unassigned Funds (Surplus) Represented or Reduced by Unrealized Gains and Losses is:- Not applicable.
- (11) The Reporting Entity Issued the Following Surplus Debentures or Similar Obligations - Not applicable.
- (12) The impact of any restatement due to prior quasi-reorganizations is as follows - Not applicable.
- (13) Effective Date of Quasi-Reorganization for a Period of Ten Years Following Reorganization - Not applicable.

**Note 14 – Liabilities, Contingencies and Assessments** - Not Applicable

**Note 15 – Leases** - Not Applicable

**Note 16 – Information about Financial Instruments with Off-Balance Sheet Risk and Financial Instruments with Concentrations of Credit Risk** - Not Applicable

**Note 17 – Sale, Transfer and Servicing of Financial Assets and Extinguishments of Liabilities** - Not Applicable

**Note 18 – Gain or Loss to the Reporting Entity from Uninsured Plans and the Uninsured Portion of Partially Insured Plans** - Not Applicable

**Note 19 – Direct Premium Written/Produced by Managing General Agents/Third Party Administrators** - Not Applicable

**Note 20 – Fair Value Measurements**

A. Fair Value Measurements

(1) Fair Value Measurements at Reporting Date

Description for Each Type of Asset or Liability	(Level 1)	(Level 2)	(Level 3)	Net Asset Value (NAV)	Total
Assets at Fair Value					
Cash Equivalents and Short Term Investments	\$ 671,865	\$ 14,975,250	\$	\$	\$ 15,647,115
Investments	\$	\$ 57,026,867	\$	\$	\$ 57,026,867
Restricted certificate of deposit	\$ 600,000	\$	\$	\$	\$ 600,000
Total	\$ 1,271,865	\$ 72,002,117	\$	\$	\$ 73,273,982
Liabilities at Fair Value					
	\$	\$	\$	\$	\$
Total	\$	\$	\$	\$	\$

- (2) Fair Value Measurements in (Level 3) of the Fair Value Hierarchy - Not Applicable.
- (3) Policies when Transfers Between Levels are Recognized - Not Applicable.
- (4) Description of Valuation Techniques and Inputs Used in Fair Value Measurement - Not Applicable.
- (5) Fair Value Disclosures - Not Applicable.

B. Fair Value Reporting under SSAP 100 and Other Accounting Pronouncements - Not Applicable.

C. Fair Value Level

Type of Financial Instrument	Aggregate Fair Value	Admitted Assets	(Level 1)	(Level 2)	(Level 3)	Net Asset Value (NAV)	Not Practicable (Carrying Value)
Cash Equivalents and Short Term Investments	\$ 15,647,115	\$ 15,645,523	\$ 671,865	\$ 14,975,250	\$	\$	\$
US Treasury securities and obligations of US government agencies, states and authorities	\$ 13,405,577	\$ 13,375,560	\$	\$ 13,405,577	\$	\$	\$
Corporate	\$ 24,534,450	\$ 24,353,585	\$	\$ 24,534,450	\$	\$	\$
Mortgage Backed Securities	\$ 9,653,733	\$ 9,574,676	\$	\$ 9,653,733	\$	\$	\$
Asset Backed Securities	\$ 6,423,049	\$ 6,399,607	\$	\$ 6,423,049	\$	\$	\$
Collateralized Mortgage Backed Securities	\$ 2,378,789	\$ 2,336,245	\$	\$ 2,378,789	\$	\$	\$
Taxable Municipal	\$ 631,269	\$ 625,000	\$	\$ 631,269	\$	\$	\$

**NOTES TO FINANCIAL STATEMENTS**

Type of Financial Instrument	Aggregate Fair Value	Admitted Assets	(Level 1)	(Level 2)	(Level 3)	Net Asset Value (NAV)	Not Practicable (Carrying Value)
Restricted certificate of deposit	\$ 600,000	\$ 600,000	\$ 600,000	\$	\$	\$	\$

**Note 21 – Other Items** - Not Applicable

**Note 22 – Events Subsequent**

Subsequent events have been considered through May 22, 2020, for these statutory financial statements which are to be issued on May 22, 2020.

A.	Did the reporting entity write accident and health insurance premium that is subject to Section 9010 of the Federal Affordable Care Act (YES/NO)?					Yes <input checked="" type="checkbox"/>	No <input type="checkbox"/>
			2019	2018			
B.	ACA fee assessment payable for the upcoming year	\$	11,281,000	\$			
C.	ACA fee assessment paid	\$		\$	10,112,432		
D.	Premium written subject to ACA 9010 assessment	\$		\$	570,652,756		
E.	Total adjusted capital before surplus adjustment (Five-Year Historical Line 14)	\$	49,693,972				
F.	Total adjusted capital after surplus adjustment (Five-Year Historical Line 14 minus 22B above)	\$	38,412,972				
G.	Authorized control level (Five-Year Historical Line 15)	\$	23,121,946				
H.	Would reporting the ACA assessment as of December 31, 2019 have triggered an RBC action level (YES/NO)?					Yes <input checked="" type="checkbox"/>	No <input type="checkbox"/>

**Note 23 – Reinsurance** - Not Applicable.

**Note 24 – Retrospectively Rated Contracts and Contracts Subject to Redetermination** - Not Applicable.

**Note 25 – Change in Incurred Losses and Loss Adjustment Expenses**

The activity in the medical claim liabilities during the years ended December 31, 2019 and 2018 is as follows:

	2019	2018
Medical claim liability at beginning of year	\$ 78,873,134	83,770,217
Medical costs and claims incurred:		
Current medical costs and claims	563,109,418	525,094,392
Prior periods insured events	(571,421)	(10,272,000)
Total incurred	<u>562,537,997</u>	<u>514,822,392</u>
Medical Claims liabilities transferred (note 1(a))		
Payment for claims:		
Current period insured events	(495,557,391)	(470,749,000)
Prior periods insured events	(72,575,853)	(48,970,475)
Total paid	<u>(568,133,244)</u>	<u>(519,719,475)</u>
Medical claim liabilities at end of year	<u>\$ 73,277,887</u>	<u>78,873,134</u>

The above table shows the components of changes in medical claim liabilities for the period indicated. Medical claim liabilities includes claims in process and other medical claims liabilities as well as provisions for the estimate of incurred but not reported claims and provisions for disputed claims obligations. Such estimates are developed using actuarial principles and assumptions that consider among other things, contractual requirements, and payment patterns, benefit changes, medical inflation, seasonality, membership, and other relevant factors.

Because medical claim liabilities include various actuarially developed estimates, the Company's actual medical costs and claims expense may be more or less than the Company's previously developed estimates.

The incurred claims for prior period insured events during 2019 and 2018 were lower due to a favorable development of claim liabilities that is attributed to lower than expected cost per service and utilization trends.

**Note 26 – Intercompany Pooling Arrangements** - Not Applicable.

**Note 27 – Structured Settlements** - Not Applicable.

**Note 28 – Health Care Receivables** - Not Applicable.

---

## **NOTES TO FINANCIAL STATEMENTS**

---

**Note 29 – Participating Policies** - Not Applicable.

**Note 30 – Premium Deficiency Reserves** - Not Applicable.

**Note 31 – Anticipated Salvage and Subrogation** - Not Applicable.

# GENERAL INTERROGATORIES

## PART 1 - COMMON INTERROGATORIES

### GENERAL

- 1.1 Is the reporting entity a member of an Insurance Holding Company System consisting of two or more affiliated persons, one or more of which is an insurer? Yes  No   
 If yes, complete Schedule Y, Parts 1, 1A and 2.
- 1.2 If yes, did the reporting entity register and file with its domiciliary State Insurance Commissioner, Director or Superintendent or with such regulatory official of the state of domicile of the principal insurer in the Holding Company System, a registration statement providing disclosure substantially similar to the standards adopted by the National Association of Insurance Commissioners (NAIC) in its Model Insurance Holding Company System Regulatory Act and model regulations pertaining thereto, or is the reporting entity subject to standards and disclosure requirements substantially similar to those required by such Act and regulations? Yes  No  N/A
- 1.3 State regulating? Puerto Rico
- 1.4 Is the reporting entity publicly traded or a member of publicly traded group? Yes  No
- 1.5 If the response to 1.4 is yes, provide the CIK (Central Index Key) code issued by the SEC for the entity/group. \_\_\_\_\_
- 2.1 Has any change been made during the year of this statement in the charter, by-laws, articles of incorporation, or deed of settlement of the reporting entity? Yes  No
- 2.2 If yes, date of change: \_\_\_\_\_
- 3.1 State as of what date the latest financial examination of the reporting entity was made or is being made. \_\_\_\_\_
- 3.2 State the as of date that the latest financial examination report became available from either the state of domicile or the reporting entity. This date should be the date of the examined balance sheet and not the date the report was completed or released. \_\_\_\_\_
- 3.3 State as of what date the latest financial examination report became available to other states or the public from either the state of domicile or the reporting entity. This is the release date or completion date of the examination report and not the date of the examination (balance sheet date). \_\_\_\_\_
- 3.4 By what department or departments? \_\_\_\_\_

- 3.5 Have all financial statement adjustments within the latest financial examination report been accounted for in a subsequent financial statement filed with departments? Yes  No  N/A
- 3.6 Have all of the recommendations within the latest financial examination report been complied with? Yes  No  N/A
- 4.1 During the period covered by this statement, did any agent, broker, sales representative, non-affiliated sales/service organization or any combination thereof under common control (other than salaried employees of the reporting entity) receive credit or commissions for or control a substantial part (more than 20 percent of any major line of business measured on direct premiums) of:
- 4.11 sales of new business? Yes  No
- 4.12 renewals? Yes  No
- 4.2 During the period covered by this statement, did any sales/service organization owned in whole or in part by the reporting entity or an affiliate, receive credit or commissions for or control a substantial part (more than 20 percent of any major line of business measured on direct premiums) of:
- 4.21 sales of new business? Yes  No
- 4.22 renewals? Yes  No
- 5.1 Has the reporting entity been a party to a merger or consolidation during the period covered by this statement? Yes  No   
 If the answer is YES, complete and file the merger history data file with the NAIC.
- 5.2 If yes, provide the name of entity, NAIC company code, and state of domicile (use two letter state abbreviation) for any entity that has ceased to exist as a result of the merger or consolidation.

1 Name of Entity	2 NAIC Company Code	3 State of Domicile

- 6.1 Has the reporting entity had any Certificates of Authority, licenses or registrations (including corporate registration, if applicable) suspended or revoked by any governmental entity during the reporting period? Yes  No
- 6.2 If yes, give full information:
- 7.1 Does any foreign (non-United States) person or entity directly or indirectly control 10% or more of the reporting entity? Yes  No
- 7.2 If yes,
- 7.21 State the percentage of foreign control \_\_\_\_\_ %
- 7.22 State the nationality(s) of the foreign person(s) or entity(s); or if the entity is a mutual or reciprocal, the nationality of its manager or attorney-in-fact and identify the type of entity(s) (e.g., individual, corporation, government, manager or attorney-in-fact).

1 Nationality	2 Type of Entity

- 8.1 Is the company a subsidiary of a bank holding company regulated with the Federal Reserve Board? Yes  No
- 8.2 If response to 8.1 is yes, please identify the name of the bank holding company.
- 8.3 Is the company affiliated with one or more banks, thrifts or securities firms? Yes  No
- 8.4 If the response to 8.3 is yes, please provide below the names and locations (city and state of the main office) of any affiliates regulated by a federal financial regulatory services agency [i.e. the Federal Reserve Board (FRB), the Office of the Comptroller of the Currency (OCC), the Federal Deposit Insurance Corporation (FDIC) and the Securities Exchange Commission (SEC)] and identify the affiliate's primary federal regulator.

1 Affiliate Name	2 Location (City, State)	3 FRB	4 OCC	5 FDIC	6 SEC

9. What is the name and address of the independent certified public accountant or accounting firm retained to conduct the annual audit?  
KPMG, LLP 250 Muñoz Rivera Ave. Suite 100 San Juan PR 0091
- 10.1 Has the insurer been granted any exemptions to the prohibited non-audit services provided by the certified independent public accountant requirements as allowed in Section 7H of the Annual Financial Reporting Model Regulation (Model Audit Rule), or substantially similar state law or regulation? Yes  No
- 10.2 If the response to 10.1 is yes, provide information related to this exemption:
- 10.3 Has the insurer been granted any exemptions related to other requirements of the Annual Financial Reporting Model Regulation as allowed for in Section 18A of the Model Regulation, or substantially similar state law or regulation? Yes  No
- 10.4 If the response to 10.3 is yes, provide information related to this exemption:



# GENERAL INTERROGATORIES

## PART 1 - COMMON INTERROGATORIES

- 10.5 Has the reporting entity established an Audit Committee in compliance with the domiciliary state insurance laws? Yes [ X ] No [ ] N/A [ ]
- 10.6 If the response to 10.5 is no or n/a, please explain:
11. What is the name, address and affiliation (officer/employee of the reporting entity or actuary/consultant associated with an actuarial consulting firm) of the individual providing the statement of actuarial opinion/certification?  
Timothy Dickson Innovacare HealthFort Lee NJ
- 12.1 Does the reporting entity own any securities of a real estate holding company or otherwise hold real estate indirectly? Yes [ ] No [ X ]
- 12.11 Name of real estate holding company
- 12.12 Number of parcels involved 0
- 12.13 Total book/adjusted carrying value \$ 0
- 12.2 If yes, provide explanation

**13. FOR UNITED STATES BRANCHES OF ALIEN REPORTING ENTITIES ONLY:**

- 13.1 What changes have been made during the year in the United States manager or the United States trustees of the reporting entity?
- 13.2 Does this statement contain all business transacted for the reporting entity through its United States Branch on risks wherever located? Yes [ ] No [ X ]
- 13.3 Have there been any changes made to any of the trust indentures during the year? Yes [ ] No [ X ]
- 13.4 If answer to (13.3) is yes, has the domiciliary or entry state approved the changes? Yes [ ] No [ ] N/A [ X ]
- 14.1 Are the senior officers (principal executive officer, principal financial officer, principal accounting officer or controller, or persons performing similar functions) of the reporting entity subject to a code of ethics, which includes the following standards? Yes [ X ] No [ ]
- (a) Honest and ethical conduct, including the ethical handling of actual or apparent conflicts of interest between personal and professional relationships;
- (b) Full, fair, accurate, timely and understandable disclosure in the periodic reports required to be filed by the reporting entity;
- (c) Compliance with applicable governmental laws, rules and regulations;
- (d) The prompt internal reporting of violations to an appropriate person or persons identified in the code; and
- (e) Accountability for adherence to the code.
- 14.11 If the response to 14.1 is no, please explain:
- 14.2 Has the code of ethics for senior managers been amended? Yes [ ] No [ X ]
- 14.21 If the response to 14.2 is yes, provide information related to amendment(s).
- 14.3 Have any provisions of the code of ethics been waived for any of the specified officers? Yes [ ] No [ X ]
- 14.31 If the response to 14.3 is yes, provide the nature of any waiver(s).

- 15.1 Is the reporting entity the beneficiary of a Letter of Credit that is unrelated to reinsurance where the issuing or confirming bank is not on the SVO Bank List? Yes [ ] No [ X ]
- 15.2 If the response to 15.1 is yes, indicate the American Bankers Association (ABA) Routing Number and the name of the issuing or confirming bank of the Letter of Credit and describe the circumstances in which the Letter of Credit is triggered.

1 American Bankers Association (ABA) Routing Number	2 Issuing or Confirming Bank Name	3 Circumstances That Can Trigger the Letter of Credit	4 Amount
			\$

### BOARD OF DIRECTORS

16. Is the purchase or sale of all investments of the reporting entity passed upon either by the Board of Directors or a subordinator committee thereof? Yes [ X ] No [ ]
17. Does the reporting entity keep a complete permanent record of the proceedings of its Board of Directors and all subordinate committees thereof? Yes [ X ] No [ ]
18. Has the reporting entity an established procedure for disclosure to its Board of Directors or trustees of any material interest or affiliation on the part of any of its officers, directors, trustees or responsible employees that is in conflict or is likely to conflict with the official duties of such person? Yes [ X ] No [ ]

### FINANCIAL

19. Has this statement been prepared using a basis of accounting other than Statutory Accounting Principles (e.g., Generally Accepted Accounting Principles)? Yes [ ] No [ X ]
- 20.1 Total amount loaned during the year (inclusive of Separate Accounts, exclusive of policy loans):
- 20.11 To directors or other officers \$ 0
- 20.12 To stockholders not officers \$ 0
- 20.13 Trustees, supreme or grand (Fraternal only) \$ 0
- 20.2 Total amount of loans outstanding at the end of year (inclusive of Separate Accounts, exclusive of policy loans):
- 20.21 To directors or other officers \$ 0
- 20.22 To stockholders not officers 0
- 20.23 Trustees, supreme or grand (Fraternal only) 0
- 21.1 Were any assets reported in this statement subject to a contractual obligation to transfer to another party without the liability for such obligation being reported in the statement? Yes [ ] No [ X ]
- 21.2 If yes, state the amount thereof at December 31 of the current year:
- 21.21 Rented from others \$ 0
- 21.22 Borrowed from others \$ 0
- 21.23 Leased from others \$ 0
- 21.24 Other \$ 0
- 22.1 Does this statement include payments for assessments as described in the *Annual Statement Instructions* other than guaranty fund or guaranty association assessments? Yes [ ] No [ X ]
- 22.2 If answer is yes:
- 22.21 Amount paid as losses or risk adjustment \$ 0
- 22.22 Amount paid as expenses \$ 0
- 22.23 Other amounts paid \$ 0
- 23.1 Does the reporting entity report any amounts due from parent, subsidiaries or affiliates on Page 2 of this statement? Yes [ ] No [ X ]

# GENERAL INTERROGATORIES

## PART 1 - COMMON INTERROGATORIES

23.2 If yes, indicate any amounts receivable from parent included in the Page 2 amount: \$ 0

### INVESTMENT

24.01 Were all the stocks, bonds and other securities owned December 31 of current year, over which the reporting entity has exclusive control, in the actual possession of the reporting entity on said date (other than securities lending programs addressed in 24.03)? Yes  No

24.02 If no, give full and complete information, relating thereto:

24.03 For security lending programs, provide a description of the program including value for collateral and amount of loaned securities, and whether collateral is carried on or off-balance sheet (an alternative is to reference Note 17 where this information is also provided).

24.04 Does the company's security lending program meet the requirements for a conforming program as outlined in the *Risk-Based Capital Instructions*? Yes  No  N/A

24.05 If answer to 24.04 is yes, report amount of collateral for conforming programs. \$ 0

24.06 If answer to 24.04 is no, report amount of collateral for other programs \$ 0

24.07 Does your securities lending program require 102% (domestic securities) and 105% (foreign securities) from the counterparty at the outset of the contract? Yes  No  N/A

24.08 Does the reporting entity non-admit when the collateral received from the counterparty falls below 100%? Yes  No  N/A

24.09 Does the reporting entity or the reporting entity's securities lending agent utilize the Master Securities Lending Agreement (MSLA) to conduct securities lending? Yes  No  N/A

24.10 For the reporting entity's security lending program, state the amount of the following as of December 31 of the current year:

24.101 Total fair value of reinvested collateral assets reported on Schedule DL, Parts 1 and 2: \$ 0

24.102 Total book adjusted/carrying value of reinvested collateral assets reported on Schedule DL, Parts 1 and 2: \$ 0

24.103 Total payable for securities lending reported on the liability page: \$ 0

25.1 Were any of the stocks, bonds or other assets of the reporting entity owned at December 31 of the current year not exclusively under the control of the reporting entity or has the reporting entity sold or transferred any assets subject to a put option contract that is current in force? (Exclude securities subject to Interrogatory 21.1 and 24.03.) Yes  No

25.2 If yes, state the amount thereof at December 31 of the current year:

25.21 Subject to repurchase agreements \$ 0

25.22 Subject to reverse repurchase agreements \$ 0

25.23 Subject to dollar repurchase agreements \$ 0

25.24 Subject to reverse dollar repurchase agreements \$ 0

25.25 Placed under option agreements \$ 0

25.26 Letter stock or securities restricted as sale – excluding FHLB Capital Stock \$ 0

25.27 FHLB Capital Stock \$ 0

25.28 On deposit with states \$ 0

25.29 On deposit with other regulatory bodies \$ 600,000

25.30 Pledged as collateral – excluding collateral pledged to an FHLB \$ 0

25.31 Pledged as collateral to FHLB – including assets backing funding agreements \$ 0

25.32 Other \$ 0

25.3 For category (25.26) provide the following:

1 Nature of Restriction	2 Description	3 Amount
		\$

26.1 Does the reporting entity have any hedging transactions reported on Schedule DB? Yes  No

26.2 If yes, has a comprehensive description of the hedging program been made available to the domiciliary state? Yes  No  N/A   
If no, attach a description with this statement.

**Lines 26.3 through 26.5: FOR LIFE/FRATERNAL REPORTING ENTITIES ONLY:**

26.3 Does the reporting entity utilize derivatives to hedge variable annuity guarantees subject to fluctuations as a results of interest rate sensitivity? Yes  No

26.4 If the response to 26.3 is yes, does the reporting entity utilize:

26.41 Special accounting provision of SSAP No. 108 Yes  No

26.42 Permitted accounting practice Yes  No

26.43 Other accounting guidance Yes  No

26.5 By responding yes to 26.41 regarding utilizing the special accounting provisions of SSAP No. 108, the reporting entity attests to the following: Yes  No

- The reporting entity has obtained explicit approval from the domiciliary state.
- Hedging strategy subject to the special accounting provisions is consistent with the requirements of VM-21.
- Actuarial certification has been obtained which indicates that the hedging strategy is incorporated within the establishment of VM-21 reserves and provides the impact of the hedging strategy within the Actuarial Guidance Conditional Tail Expectation Amount.
- Financial Officer Certification has been obtained which indicates that the hedging strategy meets the definition of a Clearly Defined Hedging Strategy within VM-21 and the Clearly Defined Hedging Strategy is the hedging strategy being used by the company in its actual day-to-day risk mitigation efforts.

27.1 Were any preferred stocks or bonds owned as of December 31 of the current year mandatorily convertible into equity, or, at the option of the issuer, convertible into equity? Yes  No

27.2 If yes, state the amount thereof at December 31 of the current year: \$ 0

28. Excluding items in Schedule E-Part 3-Special Deposits, real estate, mortgage loans and investments held physically in the reporting entity's offices, vaults or safety deposit boxes, were all stocks, bonds and other securities, owned throughout the current year held pursuant to a custodial agreement with a qualified bank or trust company in accordance with Section 1, III - General Examination Considerations, F. Outsourcing of Critical Functions, Custodial or Safekeeping Agreements of the NAIC *Financial Condition Examiners Handbook*? Yes  No

28.01 For agreements that comply with the requirements of the NAIC *Financial Condition Examiners Handbook*, complete the following:

1 Name of Custodian(s)	2 Custodian's Address
Conning	One Financial Plaza, Hartford, CT 06103, USA

28.02 For all agreements that do not comply with the requirements of the NAIC *Financial Condition Examiners Handbook*, provide the name, location and a complete explanation

**GENERAL INTERROGATORIES**

**PART 1 - COMMON INTERROGATORIES**

1 Name(s)	2 Location(s)	3 Complete Explanation(s)
--------------	------------------	------------------------------

28.03 Have there been any changes, including name changes, in the custodian(s) identified in 28.01 during the current year? Yes [ ] No [ X ]

28.04 If yes, give full and complete information relating thereto:

1 Old Custodian	2 New Custodian	3 Date of Change	4 Reason
--------------------	--------------------	---------------------	-------------

28.05 Investment management – Identify all investment advisors, investment managers, broker/dealers, including individuals that have the authority to make investment decisions on behalf of the reporting entity. For assets that are managed internally by employees of the reporting entity, note as such. ["...that have access to the investment accounts", "... handle securities"].

1 Name of Firm or Individual	2 Affiliation
---------------------------------	------------------

28.0597 For those firms/individuals listed in the table for Question 28.05, do any firms/individuals unaffiliated with the reporting entity (i.e. designated with a "U") manage more than 10% of the reporting entity's invested assets? Yes [ ] No [ X ]

28.0598 For firms/individuals unaffiliated with the reporting entity (i.e. designated with a "U") listed in the table for Question 28.05, does the total assets under management aggregate to more than 50% of the reporting entity's invested assets? Yes [ ] No [ X ]

28.06 For those firms or individuals listed in the table for 28.05 with an affiliation code of "A" (affiliated) or "U" (unaffiliated), provide the information for the table below.

1 Central Registration Depository Number	2 Name of Firm or Individual	3 Legal Entity Identifier (LEI)	4 Registered With	5 Investment Management Agreement (IMA) Filed
---	---------------------------------	------------------------------------	----------------------	--

29.1 Does the reporting entity have any diversified mutual funds reported in Schedule D-Part 2 (diversified according to the Securities and Exchange Commission (SEC) in the Investment Company Act of 1940 [Section 5 (b) (1)])? Yes [ ] No [ X ]

29.2 If yes, complete the following schedule:

1 CUSIP	2 Name of Mutual Fund	3 Book/Adjusted Carrying Value
		\$
29.2999 TOTAL		\$

29.3 For each mutual fund listed in the table above, complete the following schedule:

1 Name of Mutual Fund (from above table)	2 Name of Significant Holding of the Mutual Fund	3 Amount of Mutual Fund's Book/Adjusted Carrying Value Attributable to the Holding	4 Date of Valuation
		\$	

30. Provide the following information for all short-term and long-term bonds and all preferred stocks. Do not substitute amortized value or statement value for fair value.

		1 Statement (Admitted) Value	2 Fair Value	3 Excess of Statement over Fair Value (-), or Fair Value over Statement (+)
30.1	Bonds	\$ 0	\$ 0	\$ 0
30.2	Preferred Stocks	\$ 0	\$ 0	\$ 0
30.3	Totals	\$ 0	\$ 0	\$ 0

30.4 Describe the sources or methods utilized in determining the fair values:

SVO

31.1 Was the rate used to calculate fair value determined by a broker or custodian for any of the securities in Schedule D? Yes [ X ] No [ ]

31.2 If the answer to 31.1 is yes, does the reporting entity have a copy of the broker's or custodian's pricing policy (hard copy or electronic copy) for all brokers or custodians used as a pricing source? Yes [ X ] No [ ]

31.3 If the answer to 31.2 is no, describe the reporting entity's process for determining a reliable pricing source for purposes of disclosure of fair value for Schedule D:

32.1 Have all the filing requirements of the *Purposes and Procedures Manual of the NAIC Investment Analysis Office* been followed? Yes [ X ] No [ ]

32.2 If no, list exceptions:

33. By self-designating 5GI securities, the reporting entity is certifying the following elements for each self-designation 5GI security:

- a. Documentation necessary to permit a full credit analysis of the security does not exist or an NAIC CRP credit rating for an FE or PL security is not available.
- b. Issuer or obligor is current on all contracted interest and principal payments.
- c. The insurer has an actual expectation of ultimate payment of all contracted interest and principal.

Has the reporting entity self-designated 5GI securities? Yes [ ] No [ X ]

34. By self-designating PLGI securities, the reporting entity is certifying the following elements of each self-designated PLGI security:

- a. The security was purchased prior to January 1, 2018.
- b. The reporting entity is holding capital commensurate with the NAIC Designation reported for the security.
- c. The NAIC Designation was derived from the credit rating assigned by an NAIC CRP in its legal capacity as an NRSRO which is shown on a current private letter rating held by the insurer and available for examination by state insurance regulators.
- d. The reporting entity is not permitted to share this credit rating of the PL security with the SVO.

Has the reporting entity self-designated PLGI securities? Yes [ ] No [ X ]

35. By assigning FE to a Schedule BA non-registered private fund, the reporting entity is certifying the following elements of each self-designated FE fund:

- a. The shares were purchased prior to January 1, 2019.

## GENERAL INTERROGATORIES

### PART 1 - COMMON INTERROGATORIES

- b. The reporting entity is holding capital commensurate with the NAIC Designation reported for the security.
- c. The security had a public credit rating(s) with annual surveillance assigned by an NAIC CRP in its legal capacity as an NRSRO prior to January 1, 2019.
- d. The fund only or predominantly holds bonds in its portfolio.
- e. The current reported NAIC Designation was derived from the public credit rating(s) with annual surveillance assigned by an NAIC CRP in its legal capacity as an NRSRO.
- f. The public credit rating(s) with annual surveillance assigned by an NAIC CRP has not lapsed.

Has the reporting entity assigned FE to Schedule BA non-registered private funds that complied with the above criteria?

Yes [  ] No [  ]

#### OTHER

36.1 Amount of payments to trade associations, service organizations and statistical or rating bureaus, if any? \$ 0

36.2 List the name of the organization and the amount paid if any such payment represented 25% or more of the total payments to trade associations, service organizations and statistical or rating bureaus during the period covered by this statement.

1 Name	2 Amount Paid
	\$

37.1 Amount of payments for legal expenses, if any? \$ 524,117

37.2 List the name of the firm and the amount paid if any such payment represented 25% or more of the total payments for legal expenses during the period covered by this statement.

1 Name	2 Amount Paid
FERRAIUOLI LLC	\$ 156,252

38.1 Amount of payments for expenditures in connection with matters before legislative bodies, officers or departments of government, if any? \$ 0

38.2 List the name of the firm and the amount paid if any such payment represented 25% or more of the total payment expenditures in connection with matters before legislative bodies, officers or departments of government during the period covered by this statement.

1 Name	2 Amount Paid
	\$

## GENERAL INTERROGATORIES

### PART 2 – HEALTH INTERROGATORIES

1.1	Does the reporting entity have any direct Medicare Supplement Insurance in force?	Yes [ ]		No [ X ]
1.2	If yes, indicate premium earned on U.S. business only.	\$		0
1.3	What portion of Item (1.2) is not reported on the Medicare Supplement Insurance Experience Exhibit?	\$		0
1.31	Reason for excluding:			
1.4	Indicate amount of earned premium attributable to Canadian and/or Other Alien not included in Item (1.2) above.	\$		0
1.5	Indicate total incurred claims on all Medicare Supplement insurance.	\$		0
1.6	Individual policies:			
	Most current three years:			
1.61	Total premium earned	\$		0
1.62	Total incurred claims	\$		0
1.63	Number of covered lives			0
	All years prior to most current three years:			
1.64	Total premium earned	\$		0
1.65	Total incurred claims	\$		0
1.66	Number of covered lives			0
1.7	Group policies:			
	Most current three years:			
1.71	Total premium earned	\$		0
1.72	Total incurred claims	\$		0
1.73	Number of covered lives			0
	All years prior to most current three years:			
1.74	Total premium earned	\$		0
1.75	Total incurred claims	\$		0
1.76	Number of covered lives			0
2.	Health Test:			
		1	2	
		Current Year	Prior Year	
2.1	Premium Numerator	\$ 613,780,411	\$ 570,652,756	
2.2	Premium Denominator	\$ 613,780,411	\$ 570,652,756	
2.3	Premium Ratio (2.1/2.2)	100.0%	100.0%	
2.4	Reserve Numerator	\$ 72,830,349	\$ 78,341,191	
2.5	Reserve Denominator	\$ 72,830,349	\$ 78,341,191	
2.6	Reserve Ratio (2.4/2.5)	100.0%	100.0%	
3.1	Has the reporting entity received any endowment or gift from contracting hospitals, physicians, dentists, or others that is agreed will be returned when, as and if the earnings of the reporting entity permits?			Yes [ ] No [ X ]
3.2	If yes, give particulars:			
4.1	Have copies of all agreements stating the period and nature of hospitals', physicians', and dentists' care offered to subscribers and dependents been filed with the appropriate regulatory agency?			Yes [ X ] No [ ]
4.2	If not previously filed, furnish herewith a copy(ies) of such agreement(s). Do these agreements include additional benefits offered?			Yes [ X ] No [ ]
5.1	Does the reporting entity have stop-loss reinsurance?			Yes [ X ] No [ ]
5.2	If no, explain:			
5.3	Maximum retained risk (see instructions)			
5.31	Comprehensive Medical	\$		0
5.32	Medical Only	\$		0
5.33	Medicare Supplement	\$		0
5.34	Dental and Vision	\$		0
5.35	Other Limited Benefit Plan	\$		0
5.36	Other	\$		0
6.	Describe arrangement which the reporting entity may have to protect subscribers and their dependents against the risk of insolvency including hold harmless provisions, conversion privileges with other carriers, agreements with providers to continue rendering services, and any other agreements:			

**GENERAL INTERROGATORIES**

**PART 2 – HEALTH INTERROGATORIES**

- 7.1 Does the reporting entity set up its claim liability for provider services on a service date basis? Yes [ X ] No [ ]
- 7.2 If no, give details
8. Provide the following information regarding participating providers:
- 8.1 Number of providers at start of reporting year 0
- 8.2 Number of providers at end of reporting year 0
- 9.1 Does the reporting entity have business subject to premium rate guarantees? Yes [ ] No [ X ]
- 9.2 If yes, direct premium earned:
- 9.21 Business with rate guarantees with rate guarantees between 15-36 months \$ 0
- 9.22 Business with rate guarantees over 36 months \$ 0
- 10.1 Does the reporting entity have Incentive Pool, Withhold or Bonus Arrangements in its provider contracts? Yes [ X ] No [ ]
- 10.2 If yes:
- 10.21 Maximum amount payable bonuses 17,627,340
- 10.22 Amount actually paid for year bonuses 0
- 10.23 Maximum amount payable withholds 0
- 10.24 Amount actually paid for year withholds 0
- 11.1 Is the reporting entity organized as:
- 11.12 A Medical Group/Staff Model, Yes [ ] No [ X ]
- 11.13 An Individual Practice Association (IPA), or, Yes [ ] No [ X ]
- 11.14 A Mixed Model (combination of above)? Yes [ ] No [ X ]
- 11.2 Is the reporting entity subject to Statutory Minimum Capital and Surplus Requirements? Yes [ X ] No [ ]
- 11.3 If yes, show the name of the state requiring such minimum capital and surplus.
- 11.4 If yes, show the amount required. \$ 0
- 11.5 Is this amount included as part of a contingency reserve in stockholder's equity? Yes [ ] No [ X ]
- 11.6 If the amount is calculated, show the calculation
12. List service areas in which reporting entity is licensed to operate:
- |                           |
|---------------------------|
| 1<br>Name of Service Area |
|                           |
- 13.1 Do you act as a custodian for health savings accounts? Yes [ ] No [ X ]
- 13.2 If yes, please provide the amount of custodial funds held as of the reporting date. \$ 0
- 13.3 Do you act as an administrator for health savings accounts? Yes [ ] No [ X ]
- 13.4 If yes, please provide the balance of the funds administered as of the reporting date. \$ 0
- 14.1 Are any of the captive affiliates reported on Schedule S, Part 3, authorized reinsurers? Yes [ ] No [ ] N/A [ X ]
- 14.2 If the answer to 14.1 is yes, please provide the following:
- | 1<br>Company Name | 2<br>NAIC Company Code | 3<br>Domiciliary Jurisdiction | 4<br>Reserve Credit | Assets Supporting Reserve Credit |                       |            |
|-------------------|------------------------|-------------------------------|---------------------|----------------------------------|-----------------------|------------|
|                   |                        |                               |                     | 5<br>Letters of Credit           | 6<br>Trust Agreements | 7<br>Other |
|                   | 0                      |                               | \$                  | \$                               | \$                    | \$         |
15. Provide the following for individual ordinary life insurance\* policies (U.S. business only) for the current year (prior to reinsurance assumed or ceded).
- 15.1 Direct Premium Written \$ 0
- 15.2 Total Incurred Claims \$ 0
- 15.3 Number of Covered Lives 0
- | *Ordinary Life Insurance Includes   |  |
|---|--|
| Term (whether full underwriting, limited underwriting, jet issue, "short form app")       |  |
| Whole Life (whether full underwriting, limited underwriting, jet issue, "short form app") |  |
| Variable Life (with or without secondary guarantee)                                       |  |
| Universal Life (with or without secondary guarantee)                                      |  |
| Variable Universal Life (with or without secondary guarantee)                             |  |
16. Is the reporting entity licensed or chartered, registered, qualified, eligible or writing business in at least two states? Yes [ ] No [ ]
- 16.1 If no, does the reporting entity assume reinsurance business that covers risks residing in at least one state other than the state of domicile of the reporting entity? Yes [ ] No [ ]

**FIVE-YEAR HISTORICAL DATA**

	1 2019	2 2018	3 2017	4 2016	5 2015
<b>Balance Sheet (Pages 2 and 3)</b>					
1. Total admitted assets (Page 2, Line 28).....	152,741,598	140,178,279	171,677,929	63,500,491	67,467,380
2. Total liabilities (Page 3, Line 24).....	103,047,626	90,530,856	115,906,334	44,714,663	51,873,240
3. Statutory minimum capital and surplus requirement.....			37,889,329	17,640,538	
4. Total capital and surplus (Page 3, Line 33).....	49,693,972	49,647,423	55,771,595	18,785,828	15,594,140
<b>Income Statement (Page 4)</b>					
5. Total revenues (Line 8).....	613,780,411	570,652,756	541,681,621	249,582,009	193,401,014
6. Total medical and hospital expenses (Line 18).....	562,537,997	500,094,212	485,463,209	224,937,623	173,570,100
7. Claims adjustment expenses (Line 20).....					
8. Total administrative expenses (Line 21).....	60,299,197	52,864,872	53,552,303	26,987,340	22,734,585
9. Net underwriting gain (loss) (Line 24).....	(9,056,783)	17,693,672	2,666,109	(2,342,954)	(2,903,671)
10. Net investment gain (loss) (Line 27).....	2,131,804	1,787,009	1,793,133	1,016,896	650,540
11. Total other income (Lines 28 plus 29).....					
12. Net income or (loss) (Line 32).....	(6,307,879)	11,958,156	4,186,153	(1,326,058)	(2,253,131)
<b>Cash Flow (Page 6)</b>					
13. Net cash from operations (Line 11).....	13,188,431	5,712,850	(1,264,705)	(10,567,204)	52,083,039
<b>Risk-Based Capital Analysis</b>					
14. Total adjusted capital.....	49,693,972	49,647,423	55,771,595	18,785,828	15,594,140
15. Authorized control level risk-based capital.....	23,121,946	20,165,584	18,944,665	8,820,269	6,601,057
<b>Enrollment (Exhibit 1)</b>					
16. Total members at end of period (Column 5, Line 7).....	257,189	276,428	257,562	125,674	129,770
17. Total member months (Column 6, Line 7).....	3,256,103	3,204,313	3,188,390	1,518,308	1,198,249
<b>Operating Percentage (Page 4)</b> <b>(Item divided by Page 4, sum of Lines 2, 3, and 5) x 100.0</b>					
18. Premiums earned plus risk revenue (Line 2 plus Lines 3 and 5).....	100.0	100.0	100.0	100.0	100.0
19. Total hospital and medical plus other non-health (Line 18 plus Line 19).....	91.7	87.6	89.6	90.1	89.7
20. Cost containment expenses.....					
21. Other claims adjustment expenses.....					
22. Total underwriting deductions (Line 23).....	101.5	96.9	99.5	100.9	101.5
23. Total underwriting gain (loss) (Line 24).....	(1.5)	3.1	0.5	(0.9)	(1.5)
<b>Unpaid Claims Analysis (U&amp;I Exhibit, Part 2B)</b>					
24. Total claims incurred for prior years (Line 13, Col. 5).....	74,779,313	89,588,081	84,342,147	40,684,591	
25. Estimated liability of unpaid claims - [prior year (Line 13, Col. 6)].....	78,341,191	94,467,352	42,051,428	45,573,479	
<b>Investments in Parent, Subsidiaries and Affiliates</b>					
26. Affiliated bonds (Sch. D Summary, Line 12, Col. 1).....					
27. Affiliated preferred stocks (Sch D. Summary, Line 18, Col. 1).....					
28. Affiliated common stocks (Sch D. Summary, Line 24, Col. 1).....					
29. Affiliated short-term investments (subtotal included in Sch. DA, Verification, Column 5, Line 10).....					
30. Affiliated mortgage loans on real estate.....					
31. All other affiliated.....					
32. Total of above Lines 26 to 31.....	0	0	0	0	0
33. Total investment in parent included in Lines 26 to 31 above.....					

NOTE: If a party to a merger, have the two most recent years of this exhibit been restated due to a merger in compliance with the disclosure requirements of SSAP No. 3, Accounting Changes and Correction of Errors?

Yes [ ] No [ ]

If no, please explain:

---

**SCHEDULE T - PREMIUMS AND OTHER CONSIDERATIONS**

Allocated by States and Territories

State, Etc.	1 Active Status (a)	Direct Business Only							9 Deposit-Type Contracts	
		2 Accident & Health Premiums	3 Medicare Title XVIII	4 Medicaid Title XIX	5 Federal Employees Health Benefits Plan Premiums	6 Life & Annuity Premiums and Other Considerations	7 Property/Casualty Premiums	8 Total Columns 2 Through 7		
1. Alabama.....AL	..N								0	
2. Alaska.....AK	..N								0	
3. Arizona.....AZ	..N								0	
4. Arkansas.....AR	..N								0	
5. California.....CA	..N								0	
6. Colorado.....CO	..N								0	
7. Connecticut.....CT	..N								0	
8. Delaware.....DE	..N								0	
9. District of Columbia.....DC	..N								0	
10. Florida.....FL	..N								0	
11. Georgia.....GA	..N								0	
12. Hawaii.....HI	..N								0	
13. Idaho.....ID	..N								0	
14. Illinois.....IL	..N								0	
15. Indiana.....IN	..N								0	
16. Iowa.....IA	..N								0	
17. Kansas.....KS	..N								0	
18. Kentucky.....KY	..N								0	
19. Louisiana.....LA	..N								0	
20. Maine.....ME	..N								0	
21. Maryland.....MD	..N								0	
22. Massachusetts.....MA	..N								0	
23. Michigan.....MI	..N								0	
24. Minnesota.....MN	..N								0	
25. Mississippi.....MS	..N								0	
26. Missouri.....MO	..N								0	
27. Montana.....MT	..N								0	
28. Nebraska.....NE	..N								0	
29. Nevada.....NV	..N								0	
30. New Hampshire.....NH	..N								0	
31. New Jersey.....NJ	..N								0	
32. New Mexico.....NM	..N								0	
33. New York.....NY	..N								0	
34. North Carolina.....NC	..N								0	
35. North Dakota.....ND	..N								0	
36. Ohio.....OH	..N								0	
37. Oklahoma.....OK	..N								0	
38. Oregon.....OR	..N								0	
39. Pennsylvania.....PA	..N								0	
40. Rhode Island.....RI	..N								0	
41. South Carolina.....SC	..N								0	
42. South Dakota.....SD	..N								0	
43. Tennessee.....TN	..N								0	
44. Texas.....TX	..N								0	
45. Utah.....UT	..N								0	
46. Vermont.....VT	..N								0	
47. Virginia.....VA	..N								0	
48. Washington.....WA	..N								0	
49. West Virginia.....WV	..N								0	
50. Wisconsin.....WI	..N								0	
51. Wyoming.....WY	..N								0	
52. American Samoa.....AS	..N								0	
53. Guam.....GU	..N								0	
54. Puerto Rico.....PR	..L			613,780,411					613,780,411	
55. U.S. Virgin Islands.....VI	..N								0	
56. Northern Mariana Islands.....MP	..N								0	
57. Canada.....CAN	..N								0	
58. Aggregate Other alien.....OT	..XXX	0	0	0	0	0	0	0	0	0
59. Subtotal.....	..XXX	0	0	613,780,411	0	0	0	0	613,780,411	0
60. Reporting entity contributions for Employee Benefit Plans.....	..XXX								0	
61. Total (Direct Business).....	..XXX	0	0	613,780,411	0	0	0	0	613,780,411	0

**DETAILS OF WRITE-INS**

58001.....									0	
58002.....									0	
58003.....									0	
58998. Summary of remaining write-ins for line 58.....		0	0	0	0	0	0	0	0	0
58999. Total (Lines 58001 through 58003 + 58998).....		0	0	0	0	0	0	0	0	0

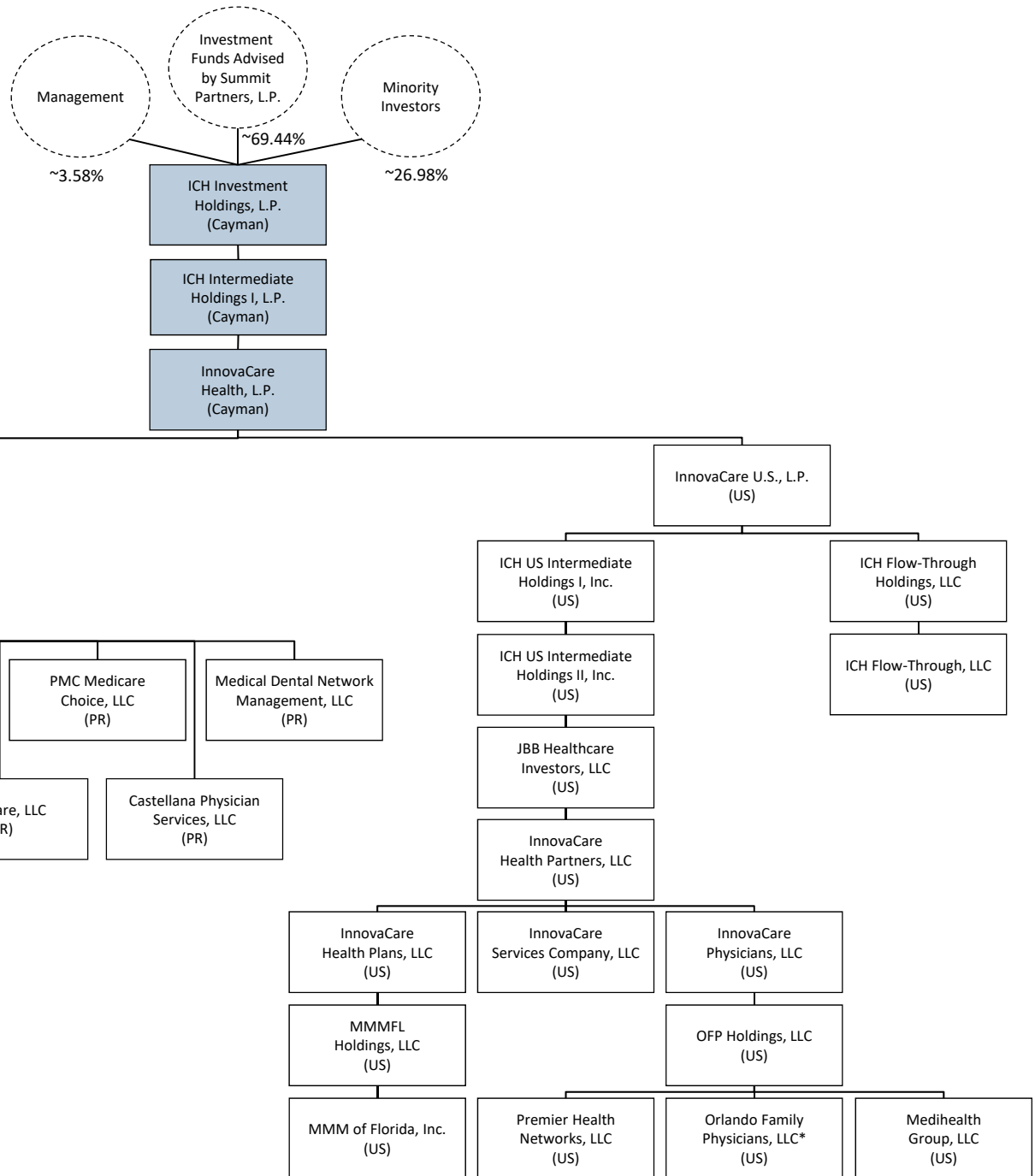
(a) Active Status Counts:

L - Licensed or Chartered - Licensed insurance carrier or domiciled RRG.....	1
E - Eligible - Reporting entities eligible or approved to write surplus lines in the state.....	0

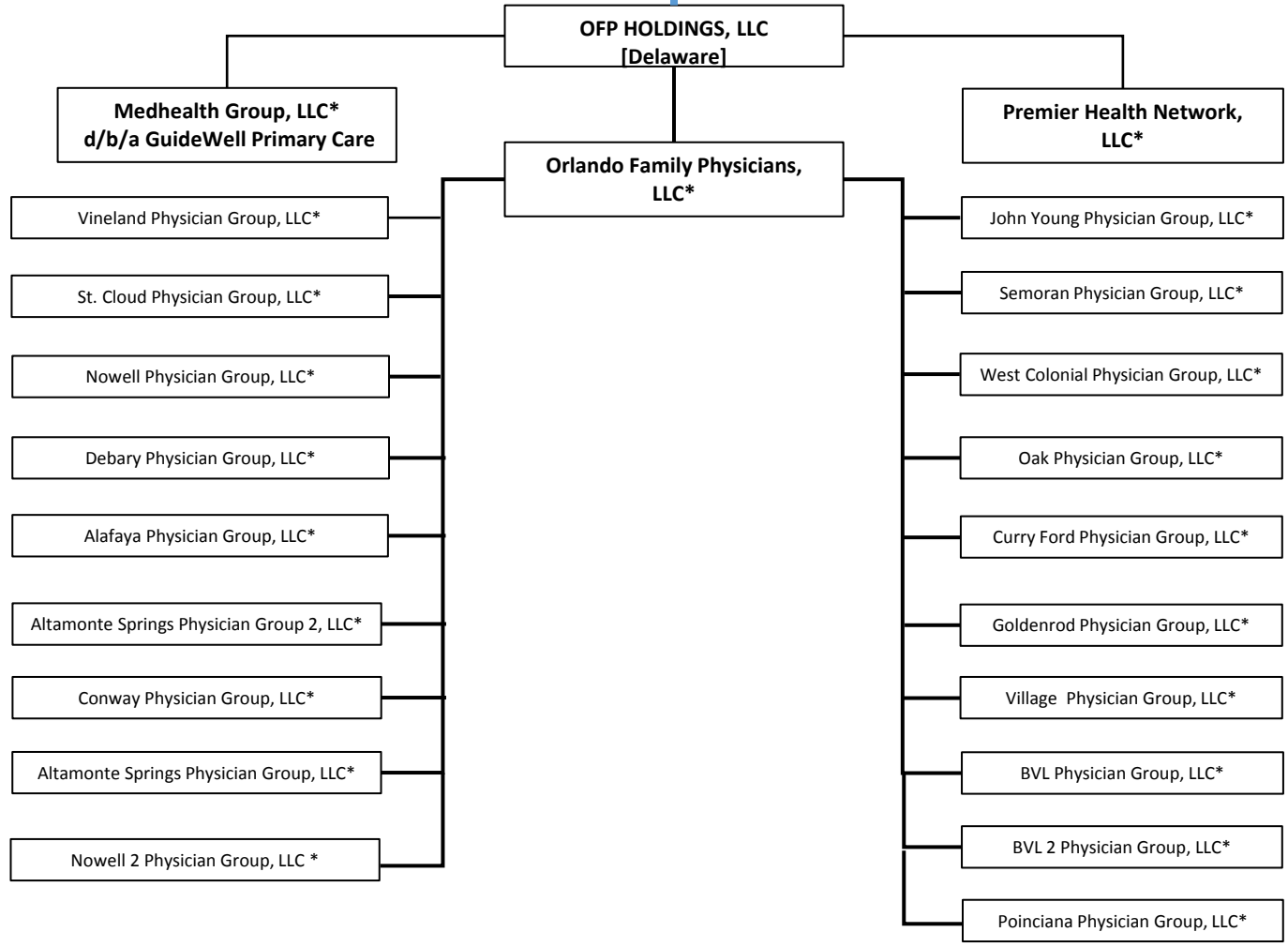
R - Registered - Non-domiciled RRGs.....	0
Q - Qualified - Qualified or accredited reinsurer.....	0
N - None of the above - Not allowed to write business in the state.....	56

(b) Explanation of basis of allocation by states, premiums by state, etc.





Continued  
from Page 1



\* Florida Entity

**2019 ALPHABETICAL INDEX  
HEALTH ANNUAL STATEMENT BLANK**

Analysis of Operations By Lines of Business	7	Schedule D – Summary By Country	SI04
Assets	2	Schedule D – Verification Between Years	SI03
Cash Flow	6	Schedule DA – Part 1	E17
Exhibit 1 – Enrollment By Product Type for Health Business Only	17	Schedule DA – Verification Between Years	SI10
Exhibit 2 – Accident and Health Premiums Due and Unpaid	18	Schedule DB – Part A – Section 1	E18
Exhibit 3 – Health Care Receivables	19	Schedule DB – Part A – Section 2	E19
Exhibit 3A – Health Care Receivables Collected and Accrued	20	Schedule DB – Part A – Verification Between Years	SI11
Exhibit 4 – Claims Unpaid and Incentive Pool, Withhold and Bonus	21	Schedule DB – Part B – Section 1	E20
Exhibit 5 – Amounts Due From Parent, Subsidiaries and Affiliates	22	Schedule DB – Part B – Section 2	E21
Exhibit 6 – Amounts Due To Parent, Subsidiaries and Affiliates	23	Schedule DB – Part B – Verification Between Years	SI11
Exhibit 7 – Part 1 – Summary of Transactions With Providers	24	Schedule DB – Part C – Section 1	SI12
Exhibit 7 – Part 2 – Summary of Transactions With Intermediaries	24	Schedule DB – Part C – Section 2	SI13
Exhibit 8 – Furniture, Equipment and Supplies Owned	25	Schedule DB – Part D – Section 1	E22
Exhibit of Capital Gains (Losses)	15	Schedule DB – Part D – Section 2	E23
Exhibit of Net Investment Income	15	Schedule DB – Part E	E24
Exhibit of Nonadmitted Assets	16	Schedule DB – Verification	SI14
Exhibit of Premiums, Enrollment and Utilization (State Page)	30	Schedule DL – Part 1	E25
Five-Year Historical Data	29	Schedule DL – Part 2	E26
General Interrogatories	27	Schedule E – Part 1 – Cash	E27
Jurat Page	1	Schedule E – Part 2 – Cash Equivalents	E28
Liabilities, Capital and Surplus	3	Schedule E – Verification Between Years	SI15
Notes To Financial Statements	26	Schedule E – Part 3 – Special Deposits	E29
Overflow Page For Write-ins	44	Schedule S – Part 1 – Section 2	31
Schedule A – Part 1	E01	Schedule S – Part 2	32
Schedule A – Part 2	E02	Schedule S – Part 3 – Section 2	33
Schedule A – Part 3	E03	Schedule S – Part 4	34
Schedule A – Verification Between Years	SI02	Schedule S – Part 5	35
Schedule B – Part 1	E04	Schedule S – Part 6	36
Schedule B – Part 2	E05	Schedule S – Part 7	37
Schedule B – Part 3	E06	Schedule T – Part 2 – Interstate Compact	39
Schedule B – Verification Between Years	SI02	Schedule T – Premiums and Other Considerations	38
Schedule BA – Part 1	E07	Schedule Y – Information Concerning Activities of Insurer Members of a Holding Company Group	40
Schedule BA – Part 2	E08	Schedule Y – Part 1A – Detail of Insurance Holding Company System	41
Schedule BA – Part 3	E09	Schedule Y – Part 2 – Summary of Insurer's Transactions With Any Affiliates	42
Schedule BA – Verification Between Years	SI03	Statement of Revenue and Expenses	4
Schedule D – Part 1	E10	Summary Investment Schedule	SI01
Schedule D – Part 1A – Section 1	SI05	Supplemental Exhibits and Schedules Interrogatories	43
Schedule D – Part 1A – Section 2	SI08	Underwriting and Investment Exhibit – Part 1	8
Schedule D – Part 2 – Section 1	E11	Underwriting and Investment Exhibit – Part 2	9
Schedule D – Part 2 – Section 2	E12	Underwriting and Investment Exhibit – Part 2A	10
Schedule D – Part 3	E13	Underwriting and Investment Exhibit – Part 2B	11
Schedule D – Part 4	E14	Underwriting and Investment Exhibit – Part 2C	12
Schedule D – Part 5	E15	Underwriting and Investment Exhibit – Part 2D	13
Schedule D – Part 6 – Section 1	E16	Underwriting and Investment Exhibit – Part 3	14
Schedule D – Part 6 – Section 2	E16		